

Majolica

CATALOGUE OF MAJOLICA.

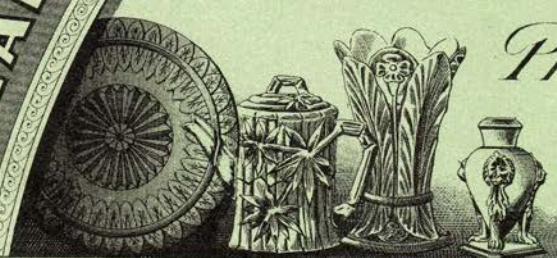
Griffen Smith & Co.

Manufacturers of

MAJOLICA, WHITE-EARTHENWARE &c

Phoenixville,

Pa.
1884.



Griffen, Smith and Hill began manufacturing Etruscan Majolica in Phoenixville, Chester County, Pennsylvania, about 1878. It is now thought that native clay and glazes were the factors that resulted in unusually beautiful pastel shades that since have been incomparable.

The skill of the principals of the firm in designing and manufacturing, combined with the artistic excellence of the young ladies that hand decorated each piece led to a wide demand for Phoenixville Majolica.

At the World's Industrial and Cotton Centennial Exposition at New Orleans in 1884, two vases and a jug submitted by Griffen, Smith and Hill won the coveted Gold Medal, the highest award possible of attainment, and resulted in orders from all over America. These orders were placed with the aid of the same catalogue from which this is reproduced.

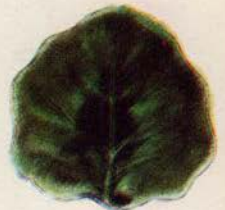
The firm was then forced to enlarge its facilities and hire more help to take care of this new business.

Mr. Wm. Hill had left the firm in the early 1880's and Mr. Smith sold out in 1889 due to failing health. A disastrous fire in the early 1890's ended the short life of this firm that had made pottery history.

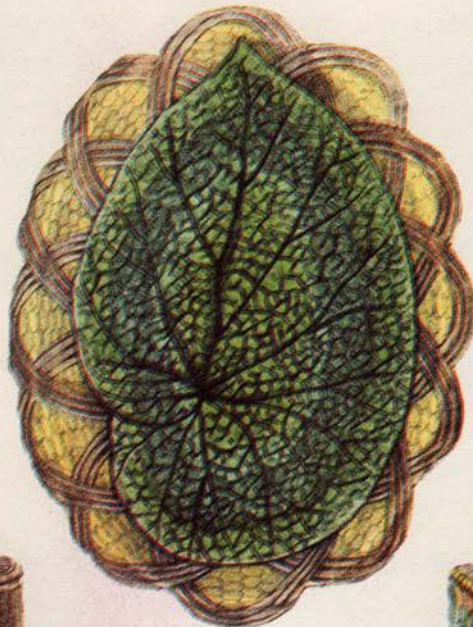
However, with the passing of years, connoisseurs began to appreciate the artistic value and variety of colors of Phoenixville Etruscan Majolica so that today it has become one of the rarest and most sought after in the field of American manufactured Majolica.



A4



B7



C3



K3



M1



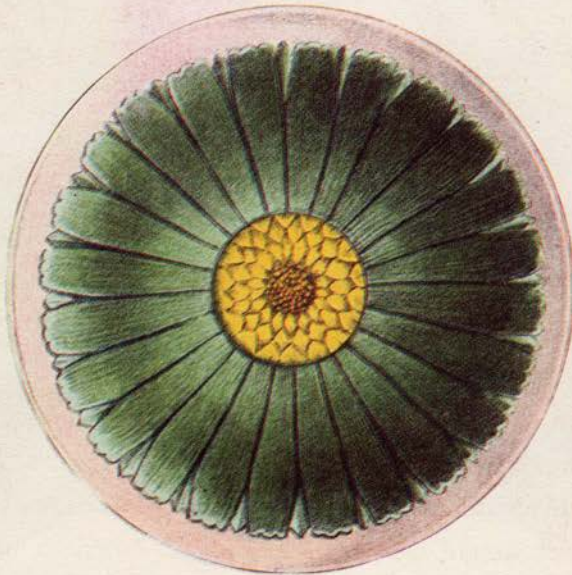
N2



N1



K1



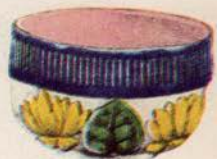
C6



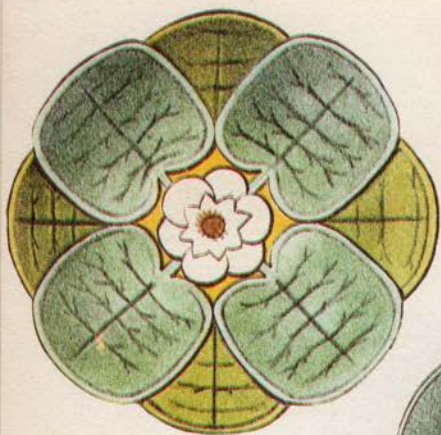
L7



L5



M2



D 13



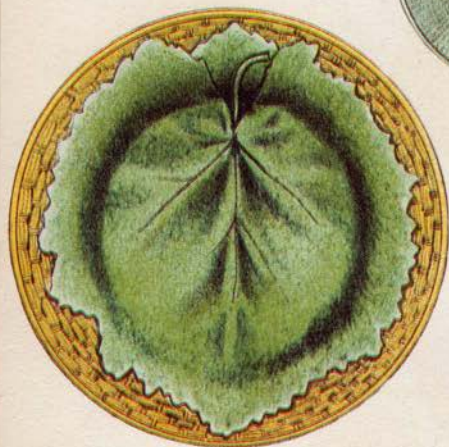
A 6



D 5



D 14



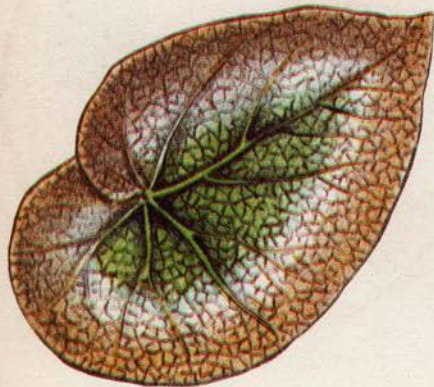
D 2



A 3



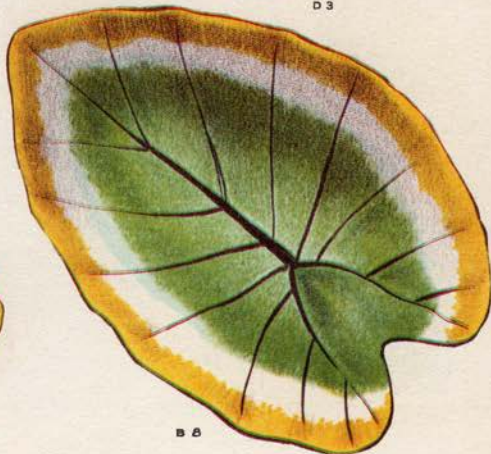
D 3



B 10



A 4



B 8



J 6



A 1



J 5



B 1



C 1



D 7



C 2



A 5



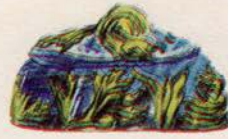
C 7



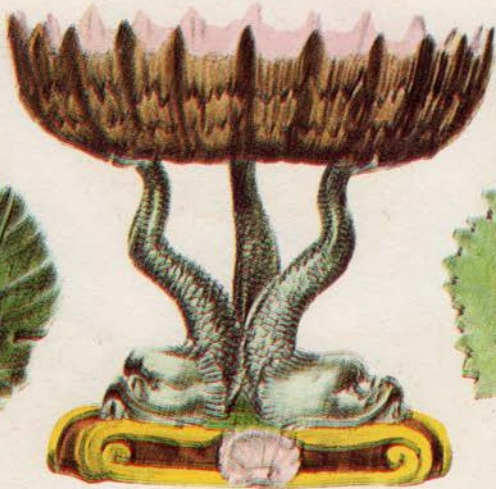
L 2



J 2



I 2



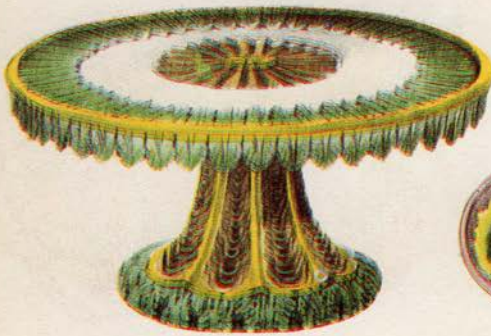
L 4



B 6



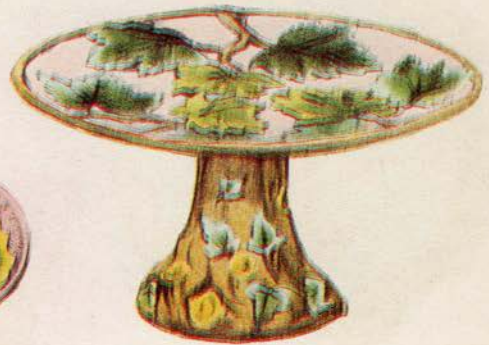
B 2



J 4



A 2



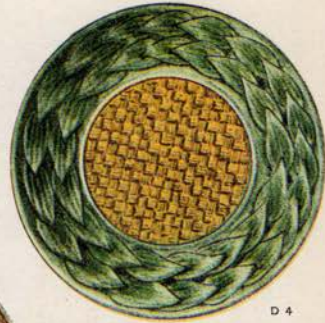
J 1



C 9



H 3



D 4



C 8



C 4



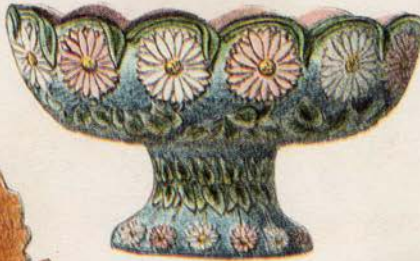
C 5



B 4



B 3



J 3



B 5



E 5



N 4



O 1



N 3



E 9



E 10



E 11



E 13



E 8



G 1



G 2



G 1



F 1



L 8



F 1



L 6



F 2



L 1



F 3



L 2



N 5



E 17



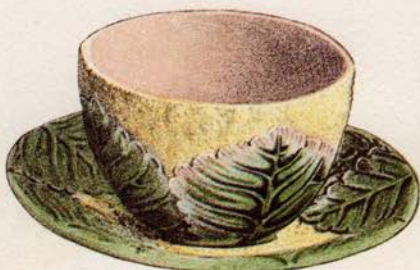
E 19



E 18



L 13



D 16



E 21



D 12-1



C 10



O 3



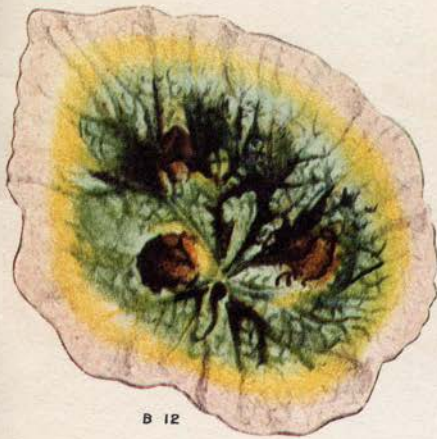
I 4



J 7



M 4



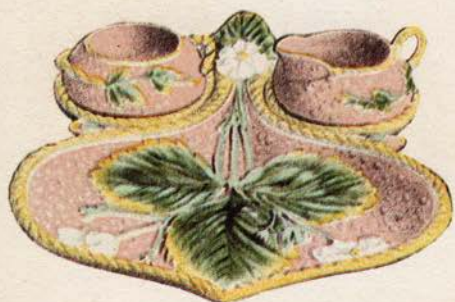
B 12



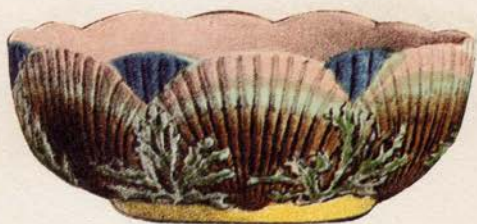
L 14



M 4



C 11



M 5



D 15



C 12

NUMBER	PATTERN	USE
A-1	Lily (Conventional)	Individual Butter Dish
A-2	Leaf on Plate	Individual Butter Dish
A-3	Begonia Leaf	Individual Butter Dish
A-4	Geranium Leaf	Individual Butter Dish
A-5	Smilax	Individual Butter Dish
A-6	Pansy	Individual Butter Dish
A-7-2	Wicker & Begonia	Individual Butter Dish
B-1	Leaf	
B-2	Leaf	
B-3	Leaves	
B-4	Leaves	
B-5	Leaves	
B-6	Leaf	
B-7	Leaf	
B-8	Leaf	Tray
B-10	Begonia Leaf	Tray
B-12	Leaf	
C-1	Oak	Card Tray
C-2	Oak	Fruit Tray
C-3	Begonia & Wicker	Tray
C-4	Begonia & Butterfly	Ash Tray
C-5	Leaf	Pin Tray
C-6	Cosmos (Conventional)	Berry Tray
C-7	Geranium	Cake Tray
C-8	Napkin	Cake Tray
C-9	Conventional	Teapot Stand
C-10	Leaves	Spice Tray
C-11	Strawberry	Individual Berry Tray with Cream and Sugar
C-12	Oak	Bread Tray
D-2	Leaf on Plate	Plate
D-3	Begonia	Plate
D-4	Smilax	Fruit
D-5	Maple Leaves	Plate
D-7	Cosmos (Conventional)	Fruit
D-12-1	Begonia on Wicker	Fruit
D-13	Lily (Conventional)	Plate
D-14	Bird	Fruit
D-15	Bamboo	Plate
D-16	Cauliflower	Bowl & Plate
E-1	Straight	Jug
E-2	Rustic	Jug
E-3	Rose	Jug
E-4	Conventional	Jug
E-5	Corn	Jug
E-6	Baseball & Soccer	Jug
E-7	Fern	Jug
E-8	Bamboo	Cream
E-9	Bamboo	Sugar
E-10	Bamboo	Tea Pot
E-11	Bamboo	Spooner
E-12	Corn	Jug
E-13	Cauliflower	Tea Pot
E-16	Thorn	Jug
E-17	Bird	Cream

NUMBER	PATTERN	USE
E-18	Bird	Sugar
E-19	Bird	Tea Pot
E-20	Sun Flower	Jug
E-21	Bird	Spooner
F-1	Lily	Cuspidor
F-2	Pineapple	Cuspidor
F-3	Fern & Floral	Flower Pot
F-8	Sunflower	Cuspidor
G-1	Begonia	Basket
G-2	Wicker	Basket
H-3	Daisy	Sauce Dish
I-2	Not described	Soap
I-4	Oak	Soap
J-1	Maple	Comport
J-2	Maple	Comport
J-3	Daisy	Salad Comport
J-4	Conventional	Cake Stand
J-5	Grapeleaf	Comport
J-6	Morning Glory	Card Comport
J-7	Lily	Salad
K-1	Lily	Individual Salt
K-3	Swan	Paper Weight
L-1	Lion	Vase
L-2	Dolphin	Comport
L-4	Dolphin	Comport
L-5	Lily	Mug
L-6	Not described	Celery
L-7	Lily	Vase
L-8	Corn	Small Vase
L-13	Oak	Mug
L-14	Oak	Vase
M-1	Lily	Bowl (low)
M-2	Lily	Bowl (high)
M-3	Rose	Bowl (high)
M-4	Rose	Bowl (low)
M-4	Rose	Plate for Bowl
M-5	Shell & Seaweed	Nappy
M-8	Bamboo	Bowl
M-9	Cauliflower	Bowl & Plate
M-10	Shell & Seaweed	Cigar Box
N-1	Lily & Swan	Sardine Box
N-2	Butterfly	Covered Butter
N-3	Bamboo	Covered Butter
N-4	Sardine	Box & Stand
N-5	Lily	Covered Cheese
N-6	Lily	Covered Cheese
O-1	Bamboo	Cup & Saucer
O-3	Lily	Mug

These code numbers identify the pieces illustrated in this catalogue and in many cases appear on the base of the piece itself. Since many artists were involved in the actual coloring of the pieces, one may find several color variations of a given piece.



This was the official trade mark of the firm of Griffen, Smith and Hill. Although Mr. Hill had left the firm in the early 1880's, the trade mark remained unchanged. Many pieces of Phoenixville Etruscan Majolica can be identified by this trade mark but it has been discovered that authentic Etruscan may in some cases have only a catalogue number, or a number identifying the artist.

BROOKE WEIDNER, *Publisher*
Copyright 1960

Phoenixville Majolica
Phoenixville, Penna.