

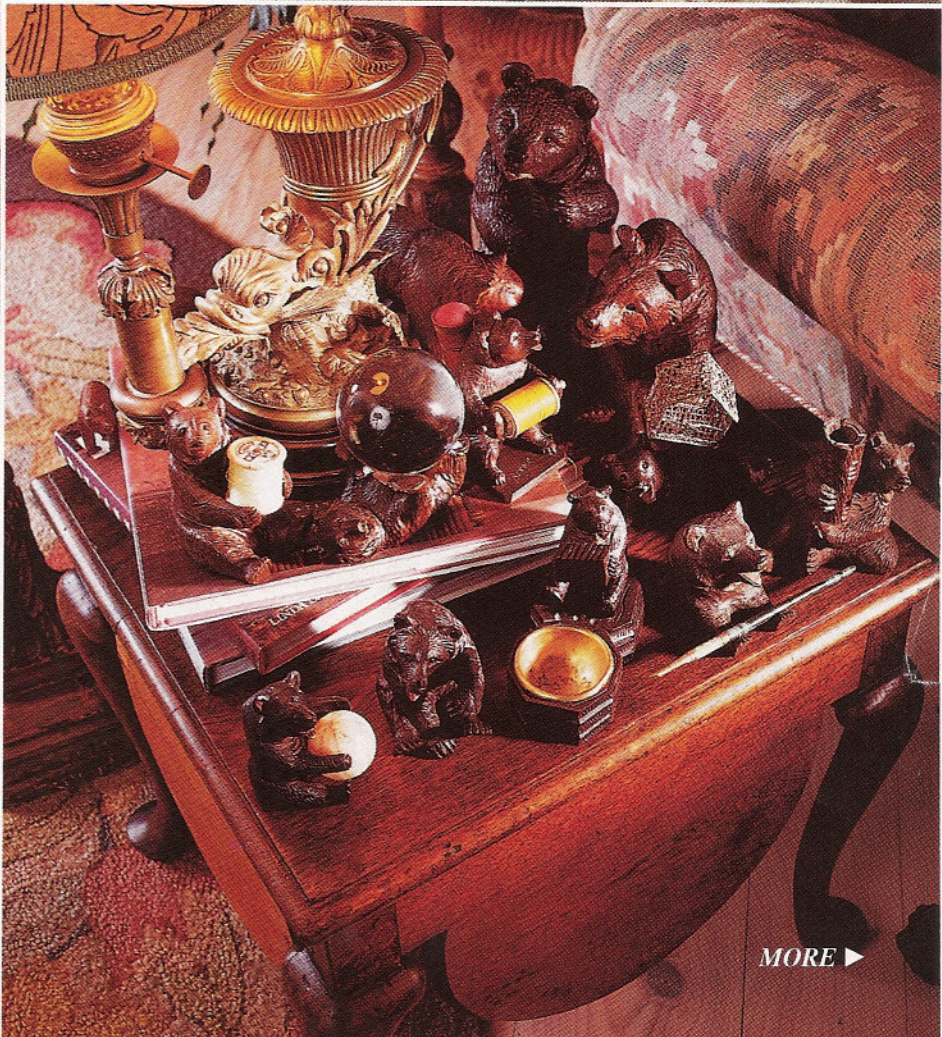


*Enid specifically designed the breakfast room as a showcase for the extensive collection of Victorian majolica now displayed behind antiqued aviary wire. For the floor, she worked with a mason to create a design reminiscent of a Victorian crazy quilt. A turn-of-the-century watering can is paired with a Puss in Boots majolica decanter set on the mid-1800s Irish pine table.*



MORE ▶

Enid designed the cabinet in the L-shaped kitchen, allowing sufficient space for her rabbits to show off their Easter finery. She gave the papier-mâché airplane (complete with rabbit pilot, of course) to her husband, an avid builder of model airplanes and a pilot himself. When wound up, a bunny carrying a basket on his back amuses his audience by shimmying up a pole.



Joining the household menagerie, hand-carved bears from Switzerland and Germany's Black Forest assemble on the living room's Queen Anne table. The early-1800s English electrified oil lamp possesses an elaborate bronze base.

MORE ▶