

- ___ Lot 482 FORESTER cobalt rope and fern cheese keeper with floral top and base rim, great color, 11”h, 12 1/2”d



LOT 482

- ___ Lot 483 Cobalt tri-angular floral and vine cheese keeper, ref: Karmason-Stacke the actual piece photographed on page 134, 7 1/2”h, minor glaze nicks to base



LOT 483

- ___ Lot 484 Cobalt wild rose cheese keeper with twig handle, great color, small rim chip to base of cover, 11”h, 11 1/2”d



LOT 484



LOT 485

- ___ Lot 485 GEORGE JONES apple blossom and basketweave cheese keeper cover, lacking base, early hairline staple repair, 11”h



LOT 486

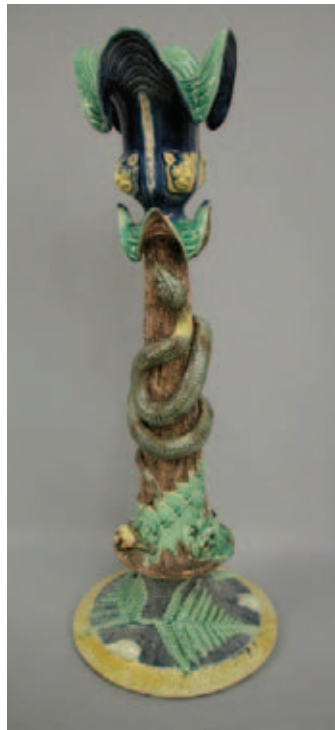
- ___ Lot 486 GEORGE JONES albino pansy cheese keeper with basketweave ground, twig handle, 8”h, 10”d



- Lot 487 MINTON monumental two tier daisy and trellis fountain supported by dolphin, 35”h, 23”d, shape no. 1207, circa 1865, ref: Karmason-Stacke II this is the actual piece photographed on page 220, outstanding color and detail, excellent condition

LOT 487

- ___ Lot 488 French Palissy Ware figural candle stick with lion face rim with snake, frog, snail, shells and ferns, nice detail, 17”h, ref: Karmason-Stacke II this is the actual piece photographed on page 229



LOT 488



- ___ Lot 489 French Palissy Ware plaque with turtle, frog, snake, shells, ferns and leaves on yellow ground, nice color and detail, 16”

LOT 489



LOT 490

- ___ Lot 490 Cunha Portugal Palissy Ware plaque with snake, lizard, beetle, butterfly and other sea creatures on heavy green grass ground, 10”



LOT 491-493

- ___ Lot 491 French Palissy Ware fish on waves card holder, 5”, ref: Karmason-Stacke II this is the actual piece photographed on page 229, professional rim and tail fin repair
- ___ Lot 492 Mafra Portugal Palissy Ware leaf cup and saucer with snake handle, rim repair to both
- ___ Lot 493 Portuguese Palissy Ware Mafra plaque with 2 frogs and beetles on heavy grass ground, 7”, ref: Karmason-Stacke II this is the actual piece photographed on page 230



LOT 494

— Lot 494 French Palissy Ware small oval plaque with fish on sand bar in center, snake, lizard, butterfly, shells and plant life on cobalt rim, nice color and detail, 10 1/2"



LOT 496

— Lot 496 GEOFFREY LUFF Contemporary Palissy Ware plaque with lizard, frog, butterfly, fly, snails and other sea creatures and plant life, great detail, 12"



LOT 495

— Lot 495 GEOFFREY LUFF Contemporary Palissy Ware plaque with turtle, frog, lizard, snake and other sea creatures and plant life, great detail, 15"



LOT 497

— Lot 497 French Palissy Ware oval tray with lady in high relief and building scene in background, 14"



LOT 498

- ___ Lot 498 French Palissy style figural compot with two mermen and sea serpent on waves supporting bowl with four mask faces, professional rim repair to bowl and to feet of sea serpent, 15 1/2”h



LOT 499

- ___ Lot 499 Longchamp French seafood tray with fish net in center surrounded by fish border and shell corners framed by bamboo , 15”



LOT 500

- ___ Lot 500 French Thomas Sergent table jardiniere, tree trunk with hawk which captured small bird , sprigs of oak leaves and acorn, great detail, 14”l, 10”h, chip to wing tip



LOT 501

- ___ Lot 501 FIELDING morning glory, wheat, ribbon and bow large punch bowl, 13 3/4”d, 6 1/2”h

- Lot 502 GEORGE JONES large chestnut and floral pitcher, great color and detail, rare form, 12 1/4”h, professional repair to handle



LOT 502

- Lot 503 MINTON lily and floral pitcher with pewter top, great color, 8”, minor base chip, rare form, shape no. 1228



LOT 503-504

- Lot 504 MINTON lily and floral pitcher with pewter top, great color, 7”, professional handle repair, shape no. 1228

- Lot 505 GEORGE JONES floral and leaf pitcher with frogs around base, great color and detail, 7 3/4”, hairline



LOT 505-506

- Lot 506 GEORGE JONES stork in march pitcher with cobalt top and bottom, bamboo handle and rim, great color and detail

- Lot 507 GEORGE JONES fox hunt tankard with fox on pewter mounted lid, scene of dog with quail on one side and fox with rabbit on other, cobalt ground, professional repair to lid and fox’s ears, 12”

- Lot 508 GEORGE JONES large double handle hunt mug with scene of dog on one side and fox with rabbit on the other, cobalt ground, professional rim, handle and hairline repair, 7”



LOT 507-508

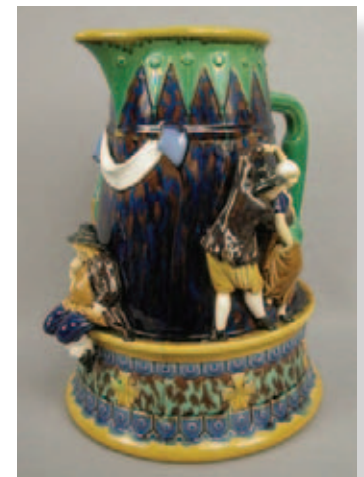
- Lot 509 T.C. BROWN WESTHEAD MOORE & CO Cobalt fern and lily of the valley pitcher, great color, minor professional rim repair

- Lot 510 T.C. BROWN WESTHEAD MOORE & CO cobalt fern and lily of the valley pitcher, professional rim repair, 6 1/4”



LOT 509-510

- Lot 511 Minton large size tavern jug, ref: Karmason-Stacke p. 43, 13 1/2”h, shape no. 487, large jug surrounded with tavern patrons



LOT 511

___ Lot 512 MINTON tower jug with jester finial, 14", shape no. 1231, ref: Karmason-Stacke p. 43, professional repair to thumb lift and lid

___ Lot 513 WEDGWOOD Caterer jug designed by Frederick Bret Russel, No. 676, circa 1867, 11", ref: Karmason-Stacke the actual piece photographed on page 77



LOT 512-513

___ Lot 514 COPELAND cobalt lotus jug, 7 1/2", 4 Gill size, ref: Karmason-Stacke p. 118, professional handle and rim repair

___ Lot 515 HOLDCROFT flat sided cobalt fish pitcher, 8", spout repair



LOT 514-515

___ Lot 516 GEORGE JONES wild rose and tree bark pitcher, professional hairline and rim repair, 8 1/4"

___ Lot 517 GEORGE JONES orchid pitcher with leaf handle, 5 1/2", ref: Karmason-Stacke p. 98, professional handle and spout repair



LOT 516-518

___ Lot 518 GEORGE JONES rustic floral and tree bark pitcher, 8", professional repair to spout

___ Lot 519 MINTON "Diana" pitcher with bearded man below spout, 11 1/2"



LOT 519

___ Lot 520 MINTON Renaissance ewer and stand with winged lady handle, stand inscribed with "Crystal Palace Art Union", professional repair to handle, rim and base of ewer, 14"



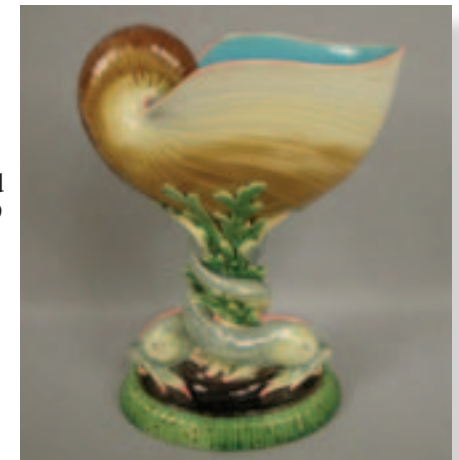
LOT 520

___ Lot 521 MINTON Renaissance ewer and stand, modeled by Emile Jeannest, baluster form ewer with winged griffon flying handle, shape 472, 13", professional handle and spout repair and rim repair to stand



LOT 521

___ Lot 522 MINTON double dolphin and conch shell sweet meat dish, 9 1/4"h



LOT 522



LOT 523

- Lot 523 MINTON monumental jardiniere with egrets and melusines, 1871, shape no. 1302, 34”h, 24”d, ref: Karmason-Stacke II this is the actual piece photographed on page 219, jardiniere is surrounded with water lily flowers and lily pads, professional repair to feet and other high points, great detail and color





LOT 524-525

- ___ Lot 524 GEORGE JONES cobalt dragonfly, swallow, water lily and cattail garden seat, 19", ref: Karmason-Stacke p. 90, professional base repair
- ___ Lot 525 GEORGE JONES cobalt dragonfly, swallow, water lily and cattail garden seat, 19", ref: Karmason-Stacke p. 90, professional base and rim repair



LOT 526

- ___ Lot 526 GEORGE JONES turquoise bird, dragonfly, water lily and cattail large jardiniere, great color, 17"d 15"h, professional rim and hairline repair



LOT 527

___ Lot 527 GEORGE JONES monumental cobalt calla lily and swallow jardiniere and pedestal, outstanding color, 50" h, chips and professional repairs to leaves and calla lily flowers, amazing detail, extremely rare to find complete



LOT 528

___ Lot 528 WEDGWOOD cobalt umbrella stand with peacock feather and yellow ribbon, great color and detail, ref: Karmason-Stacke p. 86, professional hairline repair, 21 3/4"

___ Lot 529 GEORGE JONES cobalt umbrella stand with fish swimming at base among water lilies and other flowers and leaves, great color and detail, 21", professional base repair



LOT 529

___ Lot 530 WEDGWOOD cobalt bird and fan garden seat, great color and detail, turquoise fans and birds on branches with cushion seat, 17"h, professional repair to cushion top



LOT 530

___ Lot 531 WEDGWOOD bird and fan garden seat, dark blue/green ground with brown fans and birds on branches, professional hairline repair, 17"h



LOT 531



— Lot 532 MINTON stork and heron pair of walking stick stands, shape no. 1917 and 1916, 40”h, ref: Karmason-Stacke p. 55, excellent color and detail, professional repair to beak, leaves and cattail tips, both in excellent condition

LOT 532



LOT 533

- ___ Lot 533 HOLDCROFT stork and heron flower stands, 29" and 33", ref: Karmason-Stacke p. 103, great color and detail, professional repair to heron's beak, fish, top feathers and leaf tips, professional repair to stork's beak, top feathers, and leaf tips

- ___ Lot 534 HOLDCROFT cobalt swan on waves with cattails floor jardiniere , great color and detail, 16”d, 15”h, professional rim and base foot repair



LOT 534



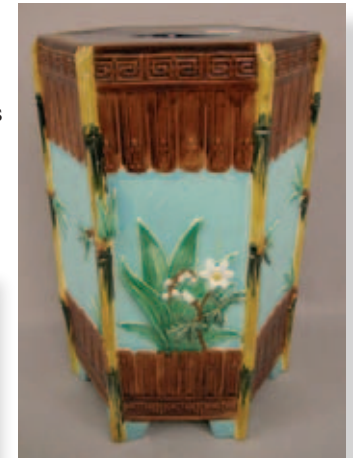
LOT 535



LOT 536

- ___ Lot 535 FIELDING turquoise bamboo umbrella stand with diamond shaped basketweave panels of crane in flight, bamboo is tied with pink ribbon and bow , nice color and detail, minor rim and base nicks, 23 1/2”
- ___ Lot 536 FIELDING fan, scroll and butterfly umbrella stand with pebble ground, bamboo rim, 22 1/2”, base and rim chips, hairline

- ___ Lot 537 HOLDCROFT hexagonal garden seat with turquoise ground, bamboo corners with sprigs of flowers and leaves on turquoise panels, 18 1/2”, professional repair to top rim and to one foot, staining to seat



LOT 537



LOT 538

- ___ Lot 538 MINTON turquoise ram's head jardiniere and stand with drapes of fruit and flowers in high relief, ref: Karmason- Stacke p. 13, shape no. 727, 14”h, minor nicks

- ___ Lot 539 FIELDING cobalt stork garden seat, great color, ref: Karmason-Stacke the actual piece photographed on page 116 , 19 3/4”
- ___ Lot 540 FIELDING cobalt stork and cattail umbrella stand, 19 3/4”, ref: Karmason-Stacke the actual piece photographed on page 116, base rim repair



LOT 539-540

- ___ Lot 541 MINTON cobalt pedestal, baluster form body molded with garlands of drapery, fruit and flowers suspended by rosettes tied with pink ribbons, base surrounded with leaves and base rim of oak leaves and acorns, 38”h, shape no. 891, minor professional base foot repair



LOT 542



LOT 541

- ___ Lot 542 MINTON cobalt pedestal jardiniere with lion masks between fruit garlands supported by pink ribbon and bow, shape no. 1429, 14”h, professional rim and base repair
- ___ Lot 543 MINTON leaf and trellis jardiniere with garlands of flowers in high relief, minor base chip, 12”h, 14”d



LOT 543

- ___ Lot 544 MINTON cobalt bellflower, leaf and fern large jardiniere and stand, 21 1/2”w, loss of bottom rim of jardiniere, top rim repair to jardiniere, stand broken and restored



LOT 544

- ___ Lot 545 MINTON cobalt urn with mythological figures, panthers and hounds accented by holly, oak leaves and acorns, ref: Karmason-Stacke II this is the actual piece photographed on page 221, circa 1865, shape no. 1992, professional base rim, top rim and handle repair, 12” x 18”



LOT 545

- ___ Lot 546 GEORGE JONES turquoise swan, water lily and cattail jardiniere, 11 1/2”h, 14”d, extensive repair to base and sides which needs to be re-done



LOT 546

- ___ Lot 547 MINTON pedestal cachepot, shape no. 1379, turquoise ground with lady in oval medallion, ring handles, 17 1/2", damage to base



LOT 547

- ___ Lot 548 WEDGWOOD basketweave and floral cachepot, 1867, 12 1/4", ref: Karmason-Stacke the actual piece photographed on page 74, professional hairline and rim repair



LOT 548

- ___ Lot 549 WEDGWOOD cobalt blackberry garden pot, circa 1868, 10 1/2", ref: Karmason-Stacke the actual piece photographed on page 74, professional repair to base and rim



LOT 549

- ___ Lot 550 GEORGE JONES pink cachepot with mask handles, 10"h, chips to handles, professional rim repair



LOT 550

- ___ Lot 551 Cobalt large two handled jardiniere and stand with cranes and putti in medallion on both sides, professional rim repair to stand and interior hairline repair to bottom of jardiniere, 13"h, 14"d



LOT 551

- ___ Lot 552 John Adams fern and floral large jardiniere and stand, ref: Karmason-Stacke illustration p. 119, hairline repair to both pieces, 17"h



LOT 552



— Lot 553 MINTON monumental turquoise floor jardiniere/urn, each handle modeled as satyr seated holding a garland of reeds, the sides molded in relief with two lady masks holding garlands of fruit and grain, on a strapwork four sided base, shape no. 1340, professional repair to top rim of base, top rim of jardiniere , and other high points, great color and detail, 27”w, 27”h

LOT 553





LOT 554

___ Lot 554 MINTON figural table center with two naiads with arms folded and their intertwined tails supporting large shell with garlands of leaves, great detail and color, shape no. 1182, 17 3/4"l, 10 1/4"h



LOT 555

___ Lot 555 MINTON oval table center with putti handles holding garlands of oak leaves and acorns joined by satyr masks, shape no. 1400, 18", professional base and rim repair



LOT 556

___ Lot 556 COPELAND table center with two fishermen with fishnet with fish underneath, 14"l, 9"h, professional repair to head of fishermen and to fish



LOT 557

___ Lot 557 BROWNFIELD figural vase with two winged putti supporting cornucopia vase on cobalt base, 9 1/2", professional rim repair to vase, leg and wing repair to putti



LOT 558

— Lot 558 MINTON cobalt oval jardiniere with leaf handles and scenic panels of putti on each side, great color, shape no. 1087, 17 1/2”l, 8”h, professional hairline and interior glaze repair

— Lot 559 MINTON cobalt urn with cover, putti handles with garlands of fruit supported by two masks, great color and detail, shape no. 1011, one putti’s head reattached, restoration to cover finial, 12 1/2”



LOT 559



LOT 560

— Lot 560 WEDGWOOD two handled jardiniere with black ground, cameo of lady on each side surrounded by vine and leaves hung by pink ribbon and bows, professional handle and rim repair, 10 1/2”d, 6 1/2”h



LOT 561

— Lot 561 HOLDCROFT cobalt oval jardiniere/table center with lady’s head handles with floral and leaf garlands, ref: Karmason-Stacke p. 106, 22”, professional foot repair



LOT 562

— Lot 562 HOLDCROFT cobalt bird footed glove box with hinged lid, cranes and flower in relief, twig handle, 11”l, professional foot repair



LOT 563-567

- ___ Lot 563 HOLDCROFT figural egg holder with cobalt ground, turquoise wells with bird on brand handle, 9", bird handle reattached, professional rim repair to tray
- ___ Lot 564 Handled egg holder with brown ground, turquoise wells surrounded by wheat, center handle restored, 8 1/4"
- ___ Lot 565 Cobalt swan on bed of cattails wall pocket with cobalt ground, 10"h, professional rim, wing tip and neck repair
- ___ Lot 566 Figural shell sweet meat server, mottled conch shell on bed of seaweed surrounded by small shells on base, 7"h
- ___ Lot 567 WEDGWOOD wicker butter tub with stand, green wicker ground trimmed in yellow with cobalt ribbons and bows, nice color, liner included
- ___ Lot 568 WEDGWOOD Argenta strawberry, ribbon and bow platter, hairline, rim chip, 16 1/2"
- ___ Lot 569 WEDGWOOD Argenta bird and fan punch bowl, 6 1/2"h, 12"d, ref: Karmason-Stacke p. 83, hairline



LOT 568-569

- ___ Lot 570 MINTON floral hanging jardiniere with original chains, shape no. 476, 14 1/2"d, cobalt ground, great color, professional repair to high points

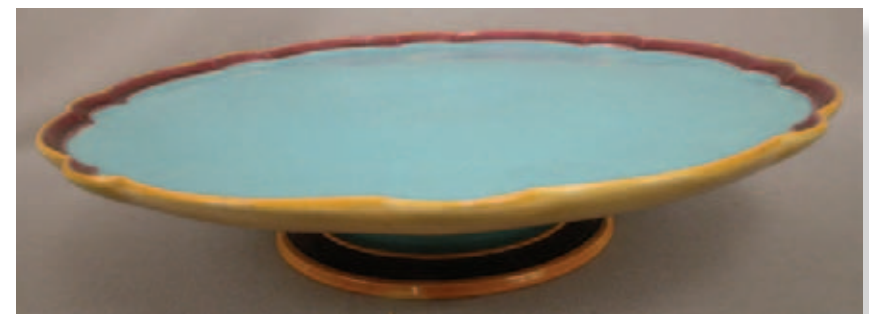


LOT 570

- ___ Lot 571 MINTON revolving luncheon tray, designed by Augustus Welby Northmore Pugin, embossed with "Fleur De Lys" and Medieval decoration, shape no. 799, 18"d, professional rim repair



LOT 571



LOT 572

- ___ Lot 572 MINTON revolving luncheon tray with turquoise ground, 18"d, professional rim repair



___ Lot 573 GEORGE JONES rare full nest quail game dish with turquoise ground, ref: Karmason-Stacke front cover, outstanding color and detail, 13 1/2"l, professional hairline repair to cover

LOT 573