

- ___ Lot 369 MINTON cobalt marine vase decorated with green seaweed supported by three mermen, 17" h, ref: Karmason-Stacke p. 62, shape no. 526, professional rim repair



LOT 369



LOT 370

- ___ Lot 370 MINTON pedestal jardiniere with three men supporting jardiniere with three lions heads with garland drapes of fruit, ref: Karmason-Stacke p. 58, 20 1/2"h, professional repairs to pedestal, base, fruit garlands and rim, shape no. 1366



LOT 371

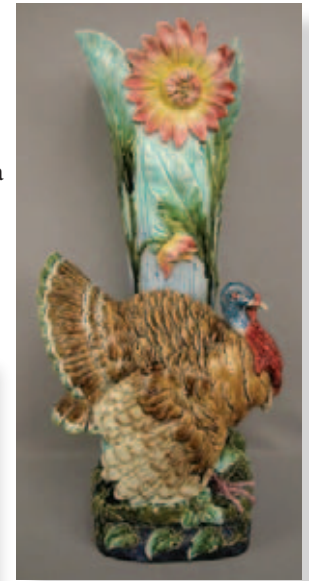
- ___ Lot 371 GEORGE JONES table center with overlapping shell on coral base with putti supporting shell atop dolphin, 14"w, 15"h , old repair to lower shells

- ___ Lot 372 Royal Dux turkey and floral figural umbrella stand, great color and detail, 28 3/4", ref: Karmason-Stacke this is the actual piece photographed on page 228, professional repair to leaf tip rim, tail feather and base rim



LOT 373

- ___ Lot 373 Continental Art Nouveau winged lady overlooking pond with water lilies figural dresser mirror, great color and detail, 24"h, professional repair to arms and wings of lady



LOT 372



LOT 374

- ___ Lot 374 MINTON rare Palissy ewer and stand, ref: Karmason-Stacke p. 41, featured in the Victoria and Albert Museum, shape no. 732, cobalt ground, great color and detail, professional handle repair, 10 1/2"



- ___ Lot 375 MINTON covered lobster tureen, shape no. 1523, ref: Karmason- Stacke p. 49, excellent condition, great detail, 14" **LOT 375-376**
- ___ Lot 376 MINTON monumental oval tray with lobsters, crabs, lemons and seaweed border, shell and seaweed center with turquoise ground, very rare, 24", shape no. 2044, professional rim repair



LOT 377-378

- ___ Lot 377 GEORGE JONES orchid and tree bark pitcher with leaf handle, ref: Karmason-Stacke the actual piece photographed on page 98, professional handle repair, rim nicks, 5 1/2"
- ___ Lot 378 GEORGE JONES butterfly and orchid oval dresser tray, ref: Karmason-Stacke the actual piece photographed on page 98, 11"



LOT 379

- ___ Lot 379 GEORGE JONES tray with turquoise ground decorated with butterfly, dragonfly, bee, wheat and bamboo border, 13"



LOT 380

- ___ Lot 380 GEORGE JONES apple blossom bordered tea service tray with mottled center, great color, 20 3/4"



- Lot 381 MINTON “Vulture and Serpent” rare form figural teapot, ref: Karmason-Stacke the actual piece used on page 2, designed by Colonel Henry Hope Crealock, 1874, also referenced in “Minton The First Two Hundred Years of Design and Production” by Joan Jones, on page 152, professional repair to snake handle of teapot, otherwise in excellent condition, 9”h

LOT 381



___ Lot 382 MINTON "Flat Iron" form rare figural teapot with cobalt ground, cat resting on handle peering over mouse with carrot, sides are decorated with 3 mice on each side, handle professionally reattached otherwise in excellent condition, 7 1/2"h, ref: Karmason-Stacke the actual piece used for front cover and page 2, shape no. 1924, believed to be designed by Dr. Christopher Dresser

LOT 382



LOT 383

- ___ Lot 383 MINTON "Spikey Fish" rare form figural teapot, ref: Karmason- Stacke, the actual piece used on page 2, date code for 1878, professional spout and lid rim repair, 7 1/4" h



LOT 384

- ___ Lot 384 MINTON figural turtle teapot with shell finial, ref: Karmason-Stacke p. 2, shape no. 629, excellent condition



LOT 385

- ___ Lot 385 MINTON monkey and cockerel cobalt teapot with snail finial, ref: Karmason-Stacke p. 2, great color and detail, professional rim repair to cover and to neck of cockerel, shape no. 624



LOT 386

- ___ Lot 386 MINTON figural monkey and coconut teapot, ref: Karmason- Stacke p. 2, shape no. 1844, professional spout, rim and handle repair to teapot and rim repair to cover, 8 1/2" l



LOT 387

- ___ Lot 387 MINTON chinaman figural teapot, ref: Karmason-Stacke p. 2, spout chip, 9”1



LOT 388

- ___ Lot 388 GEORGE JONES rare form rooster figural teapot, ref: Karmason- Stacke the actual piece photographed on page 93, 11”, professional repair to cover, spout and handle



LOT 389-392

- ___ Lot 389 GEORGE JONES cobalt monkey handled floral teapot, 9 1/2” 1, great color, professional repair to spout and lid rim
- ___ Lot 390 GEORGE JONES cobalt floral covered sugar, part of monkey handled tea set, professional repair to lid rim and flower finial
- ___ Lot 391 GEORGE JONES cobalt floral cup and saucer, part of monkey handled tea set, outstanding color
- ___ Lot 392 GEORGE JONES cobalt floral cup and saucer, part of monkey handled tea set, outstanding color



LOT 393-396

- ___ Lot 393 BROWNFIELD Isle of Man teapot, “Union Jack” with flag, 7 3/4” professional repair to hat rim, ref: Karmason-Stacke the actual piece photographed on page 118
- ___ Lot 394 BROWNFIELD Isle of Man teapot with top hat, professional repair to top hat and rim of lid, repair to spout and one foot, 9 1/2”, ref: Karmason- Stacke the actual piece photographed on page 118
- ___ Lot 395 BROWNFIELD Isle of Man on coil of rope figural teapot, professional repair to hat rim, 9 3/4”, ref: Karmason- Stacke the actual piece photographed on page 118
- ___ Lot 396 HOLDCROFT Isle of Man on coil of rope figural tobacco jar, 9 1/2”, ref: Karmason-Stacke the actual piece photographed on page 118



LOT 397-398

- ___ Lot 397 Fish swallowing fish teapot, 6 1/2”h, ref: Karmason-Stacke p. 138
- ___ Lot 398 Figural fish creamer, mate to fish swallowing fish teapot, 2 1/2”h

- ___ Lot 399 GEORGE JONES rare complete tea set, apple blossom and basket weave motif, ref: Karmason-Stacke the actual set photographed on page 91, professional spout repair to creamer, handle repair to one cup and minor rim repair to tray, tray 19 1/2”



LOT 399

- ___ Lot 400 GEORGE JONES seafood tureen with pike on bed of ferns and leaves atop basketweave base, great color and detail, 15”, minor rim nick to cover, professional repair to tail tip of fish, minor rim repair to basket



LOT 400

- ___ Lot 401 GEORGE JONES turquoise pelican sardine box with stand decorated with pelicans, fish, and flowers with bamboo accent, ref: Karmason-Stacke the actual piece photographed on page 96, professional rim repair to corner of cover and box
- ___ Lot 402 GEORGE JONES turquoise sardine box with shell finial, ref: Karmason-Stacke p. 96, professional repair to cover
- ___ Lot 403 GEORGE JONES lobster covered seafood basket, basket weave basket and stand with sprigs of seaweed in relief, cover has large lobster on bed of seaweed, professional rim restoration to cover, 9”w
- ___ Lot 404 GEORGE JONES turquoise overlapping fish and pointed leaves sardine box with stand, ref: Karmason-Stacke the actual piece photographed on page 96, professional repair to corner of cover and box



LOT 401-404

- ___ Lot 405 FIELDING fan and scroll sardine box with flower finial, turquoise pebble ground, minor nicks to lid rim
- ___ Lot 406 WEDGWOOD Argenta crate in ocean sardine box with rope handle and sprigs of seaweed and shells
- ___ Lot 407 VICTORIA POTTERY CO. sardine box with basketweave base and fish on bed of lily pads on cover, professional restoration to cover, 8”
- ___ Lot 408 WEDGWOOD Argenta barrel in ocean with seaweed sardine box, 7 1/2”w



LOT 405-408



LOT 409-413

- ___ Lot 409 Cobalt round butter tub with swan, butterflies and dragon flies, also decorated with lily pads and water lilies, professional restoration to cover
- ___ Lot 410 Cobalt round butter tub with bird, butterflies and dragon flies, also decorated with lily pads and water lilies, nice color, professional rim repair to cover
- ___ Lot 411 Cobalt sardine box with swan on lily pads and waves on cover, base is supported by 4 fish on corners, professional rim repair to cover, minor nicks to fish fins
- ___ Lot 412 JRL Cobalt sardine box with overlapping fish on cover, nice color
- ___ Lot 413 Cobalt sardine box with bird and dragonflies on cover, base and cover is decorated with lily pads and water lilies, rim chip repair to base
- ___ Lot 414 Pond lily comport supported by three storks on base, nice color, 9”d, 6”h, professional repair to legs of storks



LOT 414-415

- ___ Lot 415 WEDGWOOD mottled shell comport supported by three dolphins, 9”d, 6 3/4”h



LOT 416-417

- ___ Lot 416 EUREKA POTTERY CO. Merry Xmas and Happy New Year cake stand with turquoise pebble ground, bird in flight carrying sign, nice detail, ref: Karmason-Stacke p. 169, 9 1/2”d, 4”h, professional rim repair
- ___ Lot 417 FIELDING basketweave, floral, leaf, ribbon and bow comport, great color, 9 1/4”d, 4 1/2”h, former Russell & Mary Keith Collection

- ___ Lot 418 WEDGWOOD Cobalt botanical plate with reticulated rim, 8 3/4”, professional rim repair
- ___ Lot 419 WEDGWOOD cobalt botanical plate with reticulated rim, 8 3/4”, minor hairline
- ___ Lot 420 WEDGWOOD comport with reticulated rim, cobalt center with bird on branch and butterfly, supported by three small dolphin feet, 9 1/2”d, 3”h
- ___ Lot 421 WEDGWOOD comport with reticulated rim, cobalt center with sprigs of flowers supported by three small dolphin feet, 9 1/2”d, 3”



LOT 418-421



LOT 422-430

- ___ Lot 422 WEDGWOOD cobalt lobster and vegetable footed bowl, great color, 10 3/4”d, 5 1/4”h, professional base rim repair
- ___ Lot 423 WEDGWOOD cobalt lobster plate with vegetable border, great color, 8 1/2”
- ___ Lot 424 WEDGWOOD cobalt lobster plate with vegetable border, great color, 8 1/2”
- ___ Lot 425 WEDGWOOD cobalt lobster plate with vegetable border, great color, 8 1/2”
- ___ Lot 426 WEDGWOOD cobalt lobster plate with vegetable border, great color, 8 1/2”
- ___ Lot 427 WEDGWOOD cobalt lobster plate with vegetable border, great color, 8 1/2”
- ___ Lot 428 WEDGWOOD cobalt lobster plate with vegetable border, great color, 8 1/2”
- ___ Lot 429 WEDGWOOD cobalt lobster plate with vegetable border, great color, 8 1/2”
- ___ Lot 430 WEDGWOOD cobalt lobster plate with vegetable border, great color, 8 1/2”
- ___ Lot 431 WEDGWOOD set of 4 cobalt lobster plates with vegetable border, nice color, 8 1/2”, hairline and rim chip

- ___ Lot 432 MINTON chestnut server with warmer and rare chestnut serving spoon and brass warmer, ref: Karmason-Stacke p. 50, shape no. 594, 11"



LOT 432

- ___ Lot 433 WEDGWOOD cobalt vegetable/ salad bowl with vegetables, fork and spoon in relief, 10"d, 4 1/2"h, professional hairline repair



LOT 433-435

- ___ Lot 434 HOLDCROFT flying crane on turquoise pebble ground low comport, 9 3/4"d



LOT 436

- ___ Lot 435 GEORGE JONES pond lily low comport, nice color and detail, 9"d



- ___ Lot 436 FIELDING turquoise rectangular tray decorated with bird, butterfly and flowers with bamboo border and handles, 16"



LOT 436

- ___ Lot 437 MINTON asparagus cradle mounted on rectangular stand with floral rosettes, shape no. 1549, minor hairline to stand, 10"l



LOT 437



LOT 438

- ___ Lot 438 French Luneville 17 piece asparagus service with 2 platters, cradle, 12 plates, sauce boat with mounted stand and condiment, excellent condition



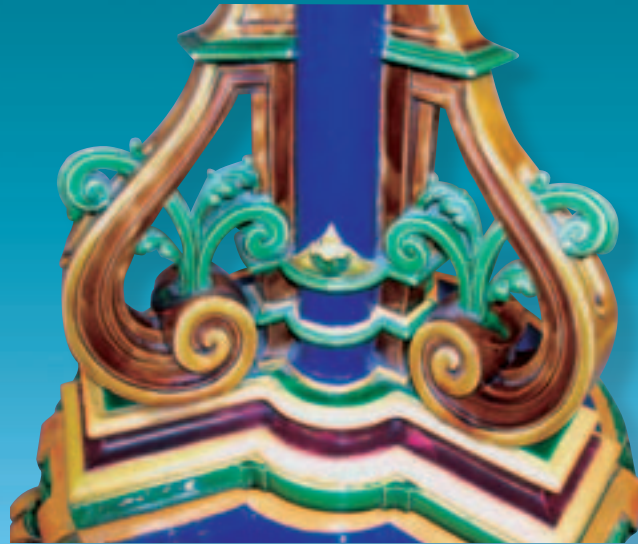
LOT 439-441

- ___ Lot 439 French asparagus pitcher, 8", minor rim glaze wear
- ___ Lot 440 French Luneville asparagus cradle and tray, ref: Karmason-Stacke p. 182, tray 13"
- ___ Lot 441 French Salins asparagus cradle/server, 14"



— Lot 442 MINTON Renaissance style jardiniere with triangular pillar with Della Robbia wreath, circa 1855, 41”h, 28” d, shape no. 1025, ref: Karmason-Stacke II this is the actual piece photographed on page 219, jardiniere top is surrounded with pine cones and lemons in high relief with floral rosettes and ribbon, pillar base has ladies heads with drapes of leaves and berries, 3 pieces, various professional repairs, a rare monumental piece of MINTON

LOT 442





LOT 443

- Lot 443 T.C. BROWN WESTHEAD MOORE & CO Egyptian figural garden seat, ref: Karmason-Stacke p. 123, 22”, minor surface wear to bottom rim, rare form



LOT 444

- Lot 444 MINTON “Queen’s Vase”, an tall baluster form molded around cobalt body with meandering grape vines and grapes with two large ram’s head handles, mottled interior, 27”h, shape no. 649, professional top and base repair and repair to ram’s horns, great color and detail



LOT 445

___ Lot 445 HOLDCROFT turquoise fish and cattail 26" platter, ref: Karmason-Stacke the actual piece photographed on page 104 , excellent detail



LOT 446

___ Lot 446 WEDGWOOD turquoise large salmon platter and 8 matching 9" plates, ref: Karmason-Stacke p. 70



LOT 447

___ Lot 447 MINTON monumental water lily and cattail oval platter, 24", great color and detail, shape no. 827, minor hairline



LOT 448

___ Lot 448 MINTON round lotus and bullrush tray, shape no. 1041, 15 1/2", outstanding color and detail

___ Lot 449 MINTON round charger with pierced border of holly and panels of putti with center well adorned with mistletoe, lavender accents, 15 1/2"



LOT 449



LOT 450

___ Lot 450 MINTON Palissy style oval platter with border molded with four shallow wells between panels of mythological figures, 14 1/2"



LOT 451

___ Lot 451 MINTON turquoise blue oval Palissy ornamental platter, ref: Karmason-Stacke p. 41, shape no. 1669, surface touch-up repair, 15" x 20"



LOT 452

- Lot 452 WEDGWOOD charger with lady atop serpent in water with raised polychrome rim, 15 1/2" professional hairline repair



LOT 453

- Lot 453 MINTON pair of scenic round plaques, one with cupid and girl on shore looking through telescope at passing ships the other of a sailboat with a putti and a sailor in the ocean, each decorated with a floral border, 13 1/4"d



___ Lot 454 MINTON monumental "Victoria" figural wine cooler, ref: Karmason-Stacke p. 43 and Minton by Joan Jones p. 156, shape no. 631, extremely rare, gray ground with fox and dog heads on rim, base is surrounded by men with hunting dogs, fox, and calf, cooler has grapes and vines around bottom rim, cover has two men under urn holding grapes supported by large wine barrel , one with same coloring is displayed in the Victoria and Albert Museum, 24"h, minor professional repairs to points



LOT 454



- ___ Lot 455 GEORGE JONES table center with 4 lobed trellis sack with pine branches and pine cone finial tied with yellow string, 13”h, rare form, professional foot and branch repair



LOT 455

- ___ Lot 456 HOLDCROFT pond lily cachepot and stand with brown ground, minor hairline to cachepot, professional rim repair to stand, 6 3/4”h



LOT 456



LOT 457

- ___ Lot 457 French figural rooster flower vase, 24”h, attributed to Massier, professional repair to top feathers and head of rooster



LOT 458

- ___ Lot 458 JEROME MASSIER figural grasshopper planter, great color and detail, 12”l, professional repair to legs



LOT 459-462

- ___ Lot 459 GEORGE JONES turquoise calla lily garden seat, ref: Karmason-Stacke p. 95, base repair, surface crazing/wear, 19"
- ___ Lot 460 GEORGE JONES turquoise calla lily cachepot, 7 1/2"h, ref: Karmason-Stacke p. 95, hairline

- ___ Lot 461 GEORGE JONES calla lily and basketweave pitcher with turquoise handle and interior, rare form, 7 1/4", ref: Karmason-Stacke p. 95, professional rim repair
- ___ Lot 462 GEORGE JONES rare turquoise calla lily cheese keeper with cow finial, outstanding color and detail, ref: Karmason-Stacke p. 95, 11 1/4"



LOT 463

- ___ Lot 463 MINTON beehive cheese keeper with twig base, ref: Karmason- Stacke back cover and page 51, shape no. 969, circa 1865, 13", professional hairline repair to cover, three small rim nicks to base, a rare cheese keeper



LOT 464

- Lot 464 GEORGE JONES extremely rare cheese keeper with snake finial handle, turquoise ground with sprigs of leaves and fern, shell border to top of cover and rim of stand, snake is lying on bed of leaves and ferns, 12”h, 12”d, professional rim repair to stand



LOT 465-466

- Lot 465 GEORGE JONES thatched hut bee hive full size cheese keeper on rustic square stand, great color and detail, small rim chip to stand, 13 1/2”h
- Lot 466 GEORGE JONES thatched hut bee hive small size cheese keeper with rustic square base, great color and detail, 7 1/2”h

- Lot 467 GEORGE JONES cobalt dragonfly and water lily full size cheese keeper with floral finial handle and bamboo stand , outstanding color and detail , small factory hole to inside of stand, 13”h, 11”d



LOT 467



LOT 470-471

- Lot 470 GEORGE JONES castle cheese keeper, castle decorated with ivy and leaves, 12 1/2”h
- Lot 471 GEORGE JONES castle cachepot and stand, staple repair to cachepot, rim chip and rim repair to stand, 9 1/2”h



LOT 468-469

- Lot 468 GEORGE JONES cheese bell with pink ground and cow finial, ref: Karmason-Stacke the actual piece photographed on page 90, 12”, professional repair to cow’s horns, hairline repair to cover, full size cheese keeper
- Lot 469 GEORGE JONES turquoise half size cow cheese keeper with leaf and rope border, repair to cow horns, rim repair to stand, 9”h, 12”d



LOT 472-473

- Lot 472 GEORGE JONES pink picket fence and floral cheese keeper, nice color, 7”h, 10”d
- Lot 473 GEORGE JONES turquoise picket fence and floral cheese keeper , hairline to stand, 10”d, 7 1/2”h



LOT 474

- ___ Lot 474 GEORGE JONES daisy, fern and leaf cheese keeper with twig handle, minor hairline to stand, 7 1/2”h, 10 1/2”d



LOT 475

- ___ Lot 475 GEORGE JONES turquoise apple blossom covered muffin dish with twig handle, 6”h, 10”d, nice color and detail



LOT 476

- ___ Lot 476 GEORGE JONES turquoise wild rose cheese keeper with twig handle on bamboo base, hairline to cover and stand, 11”d, 11 1/2”h



LOT 477

- ___ Lot 477 WEDGWOOD “Jumbo” elephant finial cheese keeper with birds, palm leaves and prunus flowers, 9 1/4”d, 7”h



LOT 478

- Lot 478 HOLDCROFT water lily cheese keeper, ref: Karmason-Stacke p. 106, professional hairline repair to cover and chip to finial flower, 8”h



LOT 479

- Lot 479 Thomas Forester & Sons stork in marsh cheese keeper, ref: Karmason-Stacke p. 111, ivory ground, 12”h, hairline repair to cover



LOT 480

- Lot 480 Cobalt swimming fish cheese keeper with seaweed, fish handle, great color, 10”h, 11 1/2”d, professional hairline repair to cover, hairline and rim repair to base



LOT 481

- Lot 481 FIELDING fan, scroll and insect on pebble ground cheese keeper with fan finial handle, 11 1/2”d, 10 1/2”h, minor hairline and rim repair to stand