

MAJOLICA AUCTIONS

Presents

The Marilyn G. Karmason Collection



October 28 & 29, 2005

TWO DAY EXCLUSIVE MAJOLICA AUCTION
HATFIELD, PENNSYLVANIA



Marilyn G. Karmason
May 21, 1928 - April 12, 2005

Marilyn was born and grew up in New York. She graduated from Barnard College, Harvard Medical School, and her psychiatric training was done at Paine Whitney Psychiatric Service at New York Presbyterian Hospital. She was married to Dr. Norton Spritz for more than 50 years, and is survived by Dr. Spritz, daughter Nina Kaweblum and three grandchildren Sara (8), Aliza Basya (6) and Yaakov (10 months).

Marilyn, as a psychiatrist, and her friend Joan Stacke frequented antique shops, flea markets and auctions looking for majolica and other collectibles, on weekends. After accumulating a number of pieces found on these weekend trips and through the purchase of some complete collections Marilyn amassed quite a collection of Majolica.

In the 1980's Marilyn decided to write a book on majolica, so in 1989 together with Joan Stacke she wrote "Majolica, A Complete History and Illustrated Survey", which has become the "Bible of Majolica" to Majolica Collectors. Marilyn has given numerous lectures and presentations on majolica across the nation. A number of her pieces were also on exhibit at the Cooper Hewitt Museum in New York. Marilyn's collection is certainly one of the most famous and well documented collections in the world.

Marilyn was also a charter member of the Majolica International Society attending the very first convention in 1989 in Fort Wayne and served many years as the Secretary for the Society. Marilyn touched majolica lovers throughout the world and she will be deeply missed.

The following memorial funds have been established in her name.

Majolica Auctions will be donating a portion of catalog sales to both of these funds.

• **Marilyn G. Karmason, M.D. Memorial Fund**

Department of Psychiatry
New York Presbyterian Hospital
525 East 68th Street
New York, New York 10021

(Funds donated to this fund will be matched by
the Dept. of Psychiatry at New York Presbyterian Hospital)

• **Marilyn G. Karmason Majolica Reference Library Fund
of the Majolica International Society**

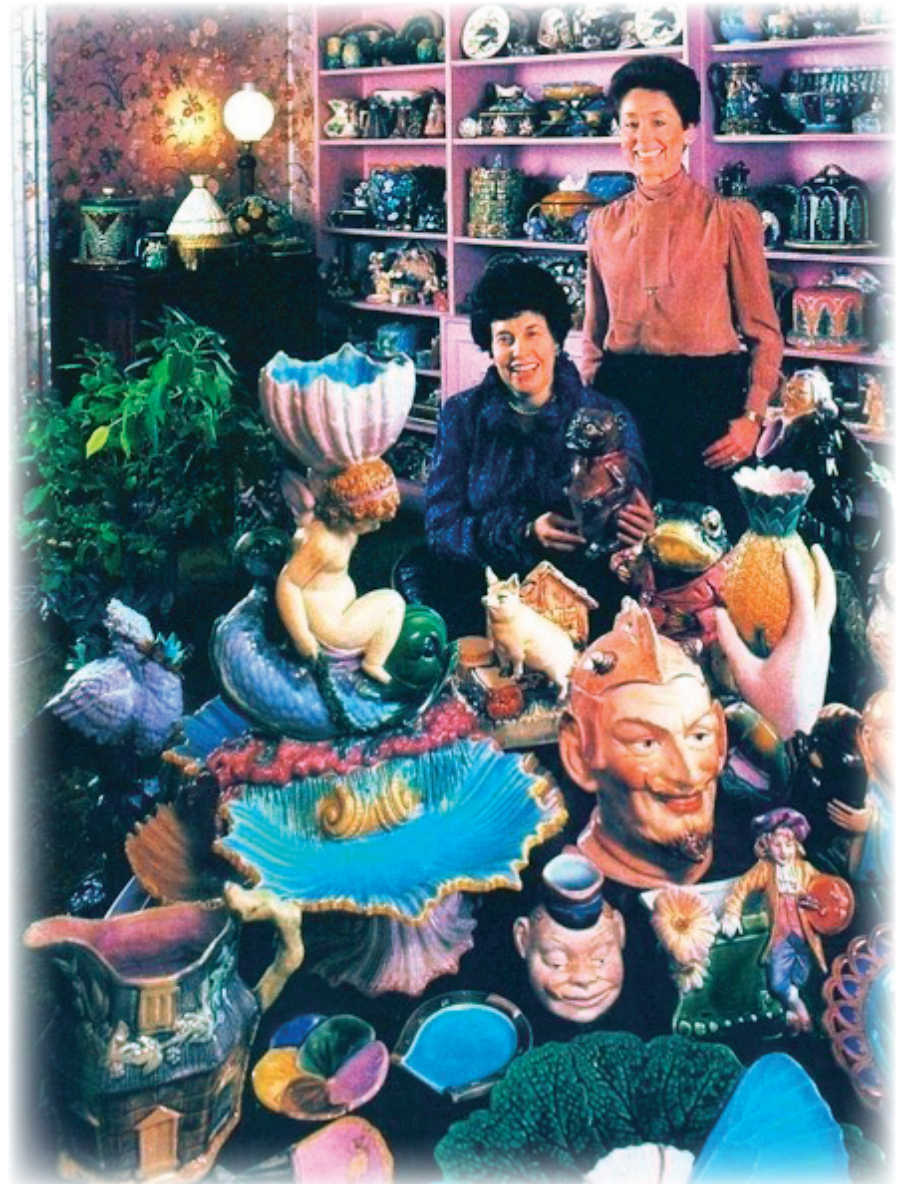
Attn: Michael Foley
77 Wright Street
New Bedford, MA 02740

Marilyn G. Karmason

Marilyn autographing The Book at Majolica Auctions.



Marilyn with her husband Norton Spritz.



Marilyn with Joan Stacke in Marilyn's apartment with "The Collection".

September 15, 2005

Dear Friend,

Majolica Auctions is honored to present you this catalog for the Marilyn G. Karmason Collection. Marilyn was a very close and dear friend for many years. We met at the very first convention of the Majolica International Society that I founded in Fort Wayne, Indiana in the late 1980's. While in New York, on many occasions I would meet Marilyn and her husband Dr. Norton Spritz (Norty) for dinner. Marilyn will truly be missed by myself, the Majolica world and to anyone who knew her. I look forward to meeting with Norty while in New York to continue our tradition in the years to come.

I would like to sincerely thank Norty for the opportunity to present to you Marilyn's fine collection of Majolica. Majolica Auctions has offered many quality and well known collections since 1990 but this collection is without a doubt the finest we have offered or that has been offered at public auction anywhere. Marilyn's collection consists of the whole spectrum of Majolica from Etruscan begonia dishes, figural tobacco jars and match strikers, to the finest English Majolica including her exceptional collection of Minton teapots and conservatory items.

Many of the pieces we will be offering will be the actual pieces that were used in the photographs in her book, "Majolica, A Complete History and Illustrated Survey". Each piece that was used in the book will be accompanied by a "Certificate of Provenance" stating that it was the piece used in the book. The entire collection also will be labeled as being part of the Karmason Collection.

For those who cannot attend this once in a lifetime auction we have our normal absentee bid form enclosed in the catalog. We will also be offering telephone bidding as well as the ability to bid live during the auction through Live Auctioneers and eBay.

Majolica Auctions would like to welcome you to this auction. This will be a great opportunity not only to see many rare examples of Majolica, but have the chance to purchase some as well. We have items in this auction for the beginning collector to the very advanced.

Something for everyone. Good Luck and Happy Majolicing.

Sincerely,



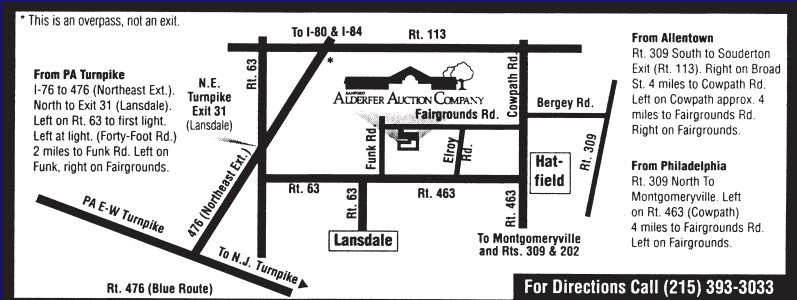
Michael G. Strawser



MICHAEL G. STRAWSER has been in the auction business in Northern Indiana and Southern Michigan since 1979, specializing in quality antique and estate auctions. Being an avid collector of Majolica, Michael founded the Majolica International Society in 1989 where he served as President and now serves as the Founder and First President of the Majolica International Society.

HOTEL ACCOMMODATIONS: The Best Western (formerly Holiday Inn) of Kulpsville has reserved a block of rooms under the name Majolica Auctions at a reduced rate. You can contact the Best Western of Kulpsville at 215-368-3800 for reservations. A list of additional hotels and lodging is listed below.

- | | |
|---|---------------------|
| Best Western of Kulpsville
(Blocked rooms listed under Majolica Auctions)
Sumneytown Pike and Turnpike | 215-368-3800 |
| Der Stone Farmhouse Bed & Breakfast
82 Derstine Rd., Hatfield | 215-723-9158 |
| Inn at Towamencin (formerly Holiday Inn)
Route 63 & Turnpike | 215-368-3800 |
| Joseph Ambler Inn Bed & Breakfast
105 Horsham Road, Montgomeryville | 215-362-7500 |
| John Kindig House Bed & Breakfast
244 W Orvilla Road, Hatfield | 215-361-3200 |



BUYING AT AUCTION

October 28 & 29, 2005

CONDITIONS

The Auctioneer, together with the consignor, have tried to represent all items as to condition, however, all items are to be sold "AS IS," "WHERE IS" and under NO circumstances may any item be returned for a full or partial refund.

TERMS

Cash, Master Card, Visa, Traveler's Checks, Money Orders and Cashiers Checks. Personal Checks ONLY when accompanied with a letter of credit from your bank. NO exceptions.

BUYER'S PREMIUM

The buyer's premium is 15%. The premium will be charged on all purchases. Online internet bidding buyer's premium is 20%.

PRE-SALE ESTIMATES

Pre-Sale estimates on individual lots are available via telephone. Reminder, these are estimates only, any given piece may be more or less than estimate, due to condition, rarity or provenance.

PREVIEW

Preview will be Friday, October 28 at 10:00 am and Saturday, October 29 at 7:30 am. You may also preview the catalog online at www.majolicaauctions.com.

AUCTION TIME

Auction will begin Friday, October 28 at 5:00 pm and Saturday, October 29 at 10:00 am.

BIDDER REGISTRATION

Floor bidders can register anytime the day of preview/auction.

ABSENTEE BIDS

Absentee bids are accepted and welcomed with a 20% deposit in the form of a check. Absentee bids need to be received prior to Noon on October 26, 2005. Final payment may be with check or credit card. Upon submitting an absentee bid form, you authorize Majolica Auctions to enter bids on your behalf, up to the maximum bid, as indicated on the absentee bid form. You also agree that Majolica Auctions accepts absentee bidding as a convenience and is not responsible for errors relating to the execution of bids. ALL absentee bid forms must be SIGNED AND DATED in order for us to execute your bids.

TELEPHONE BIDDING

You MUST pre-register for telephone bidding at least 48 hours prior to auction. (By October 26, NOON). Minimum opening telephone bid is \$1,000.00. Telephone bidding must be secured with a Credit Card - Master Card or Visa. Upon submitting the telephone bid form, you authorize Majolica Auctions to enter bids on your behalf, up to the maximum bid, as indicated on the telephone bid form. You also agree that Majolica Auctions accepts telephone bidding as a convenience and is not responsible for errors relating to the execution of bids. ALL telephone bid forms must be SIGNED AND DATED in order for us to execute your bids.

LIVE ONLINE BIDDING

This auction also offers online bidding at liveauctioneers.com as well as eBayliveauctions.com. Please visit the respective websites for terms and conditions.

SUCCESSFUL BIDS

You are requested to contact us, to see if your bids were successful on or after Wednesday, November 2, 2005.

PAYMENT

Payment for all absentee/telephone bids is due within 7 days of auction. NO exceptions.

SHIPPING/PACKING

Majolica Auctions can arrange for shipping of items purchased at the auction, if you are unable to transport. Shipments will be made via UPS. Allow 30 days for shipping. The shipper will contact you after we have received payment, to arrange for shipping. If you are taking your purchases with you, please bring your own packing material and boxes.

POST AUCTION PRICE LIST

A post auction price list will be available after the auction. If you received a courtesy catalog, please remit \$5.00 to Majolica Auctions. Price lists are mailed within 30 days of auction.



**SESSION I, FRIDAY AFTERNOON
LOT 1 TO 256**

- ___ Lot 1 ETRUSCAN Hawthorne creamer, rim chips and hairline, 7", not shown
- ___ Lot 2 WEDGWOOD ocean plate, 8 3/4", hairline, not shown
- ___ Lot 3 Avalon "Chew Rose Leaf Fine Cut" tobacco advertising plate with white pebble ground and applied flowers and leaves, rim chip, nicks/chips to flowers and leaves, 9", not shown
- ___ Lot 4 WARDLE bamboo and fern bread tray with cobalt center, 13 1/2", rim reglued, not shown
- ___ Lot 5 Lot of 6 assorted butter pats in each having signs of wear, not shown
- ___ Lot 6 Game dish insert, hairline, 8", not shown
- ___ Lot 7 Lot of 2 plates, comport, and egg server in various condition, as is, not shown

- ___ Lot 8 Lot of 9 dark green dessert plates, 8" to 9", nice group, not shown
- ___ Lot 9 FIELDING daisy, wheat, ribbon and bow large platter, 16", nice color, professional rim chip repair to backside of one handle



LOT 9-14

- ___ Lot 10 FIELDING daisy, wheat, ribbon and bow bread tray, nice color, 12"
- ___ Lot 11 FIELDING daisy, wheat, ribbon and bow cup and saucer with extra cup, minor hairline to saucer
- ___ Lot 12 FIELDING daisy, wheat, ribbon and bow footed comport, ref: Karmason-Stacke the actual piece photographed on page 114, hairlines, 9"d
- ___ Lot 13 FIELDING daisy, wheat, ribbon and bow covered butter dish with tri-corner base, ref: Karmason-Stacke the actual piece photographed on page 114, 4 1/2", professional rim repair to base
- ___ Lot 14 FIELDING daisy, wheat, ribbon and bow shaving mug, rim chip
- ___ Lot 15 Leaf and fern bread tray with cobalt border and mottled center, 14 1/2", nice color, rim chip to back



LOT 15-18

- ___ Lot 16 Bread tray with bamboo border, ribbon and bow handles and cobalt center, 13"
- ___ Lot 17 Rare dog with dog dish platter with cobalt center, leaf and fern rim, 12", rim chip to back
- ___ Lot 18 Wheat bread tray with cobalt center, 13"

- ___ Lot 19 WARDLE bird and fan tray with bamboo border, 12 3/4", hairline, rim wear
- ___ Lot 20 "Eat Thy Bread With Joy and Thankfulness" bread tray with mottled center and wheat handles, 13", rim repair



LOT 19-22

- ___ Lot 21 "Waste Not Want Not" floral bread tray with butterflies, 13 1/2", minor rim nicks to back
- ___ Lot 22 "Eat Thy Bread With Thankfulness" begonia leaf bread tray, 13", nice color, rim chip, hairline



LOT 23-26

- ___ Lot 23 Apple and pear platter, professional rim repair, 12 1/2"
- ___ Lot 24 Rustic berry and wheat bread tray, 14 1/2"
- ___ Lot 25 Wheat bread tray, 13"
- ___ Lot 26 Corn bread tray, great color, 13"
- ___ Lot 27 Cobalt wild rose platter, 13 1/2", nice color

- ___ Lot 28 "Waste Not Want Not" round begonia leaf tray, nice color, 10 1/2"



LOT 27-30

- ___ Lot 29 "Eat To Live Not Live To Eat" New England Aster floral bread tray with cornucopia handles, nice color, 13 3/4"
- ___ Lot 30 Twin shells on waves bread tray, 13", ref: Karmason-Stacke this is the actual piece photographed on page 138, professional rim repair
- ___ Lot 31 THOMAS FORESTER & SONS mottled basket with vine handle and applied flowers, chips and loss to flowers, ref: Karmason-Stacke the actual piece photographed on page 111



LOT 31-35

- ___ Lot 32 Yellow basketweave floral basket with branch handle, 8" base chip to underside
- ___ Lot 33 Cobalt floral round egg basket with 6 egg cups, crack to handle, rim chips to 2 egg cups, 7 1/2"d
- ___ Lot 34 Turquoise basket with pink rope handle, 5 1/2"
- ___ Lot 35 Egg basket with 6 egg cups, cobalt accented handle with yellow ribbon, rim nicks to one egg cup, 9"l

- ___ Lot 36 Morley & Co napkin on basket plate, 8 3/4"
- ___ Lot 37 Thomas Whieldon mottled plate, ref: Karmason-Stacke p. 29, 9"
- ___ Lot 38 Set of 4-8 3/4" overlapping begonia leaf plates
- ___ Lot 39 Mottled shell plate supported by three small dolphin feet, 9"



LOT 36-39

- ___ Lot 40 Water lily and shell dessert set with water lilies on waves and shell handled tray with 6 matching sauce dishes, tray 13 1/2", nice set



LOT 40

- ___ Lot 41 Five piece fish service set with large tray with fish and seaweed on waves and floral handles together with 4 matching sauce dishes, tray 15"



LOT 41

- ___ Lot 42 EUREKA POTTERY CO diamond shaped fan tray with bird and dragonfly, ref: Karmason-Stacke p. 169, 16"
- ___ Lot 43 EUREKA POTTERY CO fan shaped dragonfly sauce dishes, ref: Karmason-Stacke p. 169, set of 3, 2-pink and 1-cobalt ground, nice color, professional handle repair to cobalt one, 6 1/2"
- ___ Lot 44 EUREKA fan shaped butter pat with pink ground, ref: Karmason-Stacke p. 169
- ___ Lot 45 EUREKA fan shaped butter pat with turquoise ground, ref: Karmason-Stacke p. 169
- ___ Lot 46 EUREKA fan shaped butter pat with yellow ground, ref: Karmason-Stacke p. 169



LOT 42-46

- ___ Lot 47 Dog and doghouse platter with leaf and fern border, 11"
- ___ Lot 48 Fan shaped tray with dragonfly, pink ground, 10 1/2", hairline
- ___ Lot 49 Fan shaped tray with dragonfly, cobalt ground, 10 1/2"
- ___ Lot 50 Pair of fan shaped floral trays, 6 1/2", rim nick to one



LOT 47-50

- ___ Lot 51 Avalon Beetle plate clock, 8 1/4"d, ref: Karmason-Stacke p. 168



LOT 51

- ___ Lot 52 Choisy-le-Roi set of 8-8 3/4 scenic rabbit plates, 6 different scenes, nice set



LOT 52

- ___ Lot 53 Choisy le Roi pansy comport and matching plate, comport 9 1/2"d, plate 8 1/4"d



LOT 53

- ___ Lot 54 Cobalt stork in marsh large pitcher with mounted pewter top and goose head handle, great color, hairline and rim repair, 11"
- ___ Lot 55 Turquoise stork in marsh pitcher with bamboo base and cobalt handle, nice color, 9", hairline at base
- ___ Lot 56 Cobalt fish pitcher with fish handle, nice color, minor rim and base chip, 7 1/2"
- ___ Lot 57 Cobalt wild rose pitcher with pebble ground and branch handle, rim chip, hairline, 7"
- ___ Lot 58 HOLDCROFT pond lily turquoise pitcher with icelip, 9", professional spout repair



LOT 54-58

- ___ Lot 59 Bird and branch and water lily pitcher with cobalt top and base, branch handle, 9 1/2", base repair
- ___ Lot 60 Turquoise six sided floral and wheat pitcher, attributed to Holdcroft, 9 1/2"
- ___ Lot 61 FIELDING figural shell pitcher with coral handle, 7 1/4", ref: Karmason-Stacke the actual piece photographed on page 113, hairline
- ___ Lot 62 WARDLE bird and fan tri-corner pitcher with ice lip, nice color, 8"
- ___ Lot 63 New England Aster pitcher, 7 1/4", handle repair, ref: Karmason-Stacke the actual piece photographed on page 131



LOT 59-63

- ___ Lot 64 Sandford Pottery "Our Army Navy Brave Volunteers" pitcher with soldiers surrounding pitcher, dated 1860, minor hairline to base, 10 1/2"
- ___ Lot 65 FIELDING pitcher with scene of lady with staff on one side and lady with bucket and milk stool on the other, ref: Karmason-Stacke II this is the actual piece photographed on page 226, professional rim and handle repair, 8"
- ___ Lot 66 Dragonfly and fan cobalt syrup pitcher, nice color, 6", former Anne Amos Brown Collection
- ___ Lot 67 WEDGWOOD mottled syrup pitcher with mounted pewter top, handle repair, 7 1/2"
- ___ Lot 68 Daisy, wheat, ribbon and bow syrup pitcher with pewter top, 8", minor hairline



LOT 64-68

- ___ Lot 69 WARDLE bird and fan pitcher with cobalt accent, 9", minor rim glaze wear
- ___ Lot 70 Wild rose pitcher with butterfly spout, turquoise ground, cobalt accent, spout repair, rim glaze wear, hairline, 9 3/4"



LOT 69-73

- ___ Lot 71 Wild rose and tree bark pitcher, 9 1/4", interior glaze repair
- ___ Lot 72 English corn pitcher, great color, rim chip and hairline repair, 9 1/2"
- ___ Lot 73 Bird and bird's nest pitcher with begonia leaf spout and branch handle, rim chip, 9 1/2"

- ___ Lot 74 Bird in hand and two in bush pitcher, hairline, rim chip, 6"

- ___ Lot 75 Warrilow and Cope figural cottage pitcher, 5", rim nick, ref: Karmason-Stacke p. 127

- ___ Lot 76 Mottled floral creamer, 3 1/2", professional hairline repair

- ___ Lot 77 WEDGWOOD Centennial pitcher with Washington on one side and Lincoln on opposite, 5 1/2", minor base hairline



LOT 74-80

- ___ Lot 78 Figural fish creamer, 5"1
- ___ Lot 79 Wild rose creamer with butterfly spout, 4", spout nick
- ___ Lot 80 Pond lily creamer, 2 1/2", rim nick

- ___ Lot 81 Cobalt shells on waves mug, nice color, minor base repair, 3 3/4"
- ___ Lot 82 Large cobalt fish mug with fish handle, nice color, 5"
- ___ Lot 83 HOLDCROFT turquoise pond lily mug, handle re-attached
- ___ Lot 84 WEDGWOOD shell and seaweed turquoise cup and saucer, great color, former Anne Amos Brown Collection
- ___ Lot 85 FIELDING bird and fan cup and saucer



LOT 81-85

- ___ Lot 86 Turquoise drum shaped three piece teaset, attributed to Fielding, nice color, nicks to floral finial on teapot and sugar
- ___ Lot 87 Eureka tri-cornered



LOT 86-88

- ___ Lot 88 owl and fan teapot together with matching covered sugar and cream pitcher, ref: Karmason-Stacke this is the actual piece (teapot) photographed on page 169, spout nick and repair to teapot, repair to lid finial of sugar, hairline to cream pitcher, nice set

- ___ Lot 89 Shells, waves, coral and seaweed teapot with mounted pewter lid, professional handle and spout repair, 6 1/2"
- ___ Lot 90 FIELDING bird and fan tea kettle, 8"
- ___ Lot 91 Blackberry and floral teapot, spout chip, 6 1/2"
- ___ Lot 92 Cobalt oval bird and fan teapot with butterfly finial on cover, 9 1/2", professional spout repair



LOT 89-92

- ___ Lot 93 WARDLE shell and seaweed three piece teaset with coral handles, great color, ref: Karmason-Stacke the actual set photographed on page 126, spout nicks to teapot



LOT 93

- ___ Lot 94 WARDLE shell, coral, seaweed and waves oval platter, 13"
- ___ Lot 95 WARDLE shell, coral, seaweed and waves pitcher, great color, 8"
- ___ Lot 96 WARDLE shell, seaweed and coral oval footed bowl, 10", great color and detail



LOT 94-96

- ___ Lot 97 FIELDING shell and fishnet teapot with coral handle and spout, ref: Karmason-Stacke the actual piece photographed on page 113, minor nick to spout and interior rim of teapot, 4 1/2"
- ___ Lot 98 FIELDING shell and fishnet pitcher with coral handle, 6 1/2", minor hairline
- ___ Lot 99 FIELDING shell and fishnet sugar with coral handles, great color
- ___ Lot 100 Figural shell on waves teapot with coral handle, nice detail, 6 3/4"h, chip to handle, repair to spout



LOT 97-100

- ___ Lot 101 Wannopee Pottery Co. Lettuce Leaf square bowl, cup with saucer and 7" plate, ref: Karmason-Stacke p. 173, hairline to cup



LOT 101

- ___ Lot 102 Figural cat looking into cobalt basket with yellow rope rim, 5", chip to ear
- ___ Lot 103 HOLDCROFT hand vase with hand holder bouquet of flowers and leaves, 8 3/4", professional rim repair to leaf tips
- ___ Lot 104 Trenton Pottery "Justice" paperweight with eagle and young in nest, 3 3/4"d, rim nick
- ___ Lot 105 TENUOUS leaf mustard pot with cover, ref: Karmason-Stacke p. 159, minor hairline, 3"
- ___ Lot 106 TENUOUS miniature shell creamer with cobalt accent, rim nicks, 2", ref: Karmason-Stacke p. 159



LOT 102-106

- ___ Lot 107 Continental Palmer Cox Brownie policeman figural candle stick, 8 3/4"
- ___ Lot 108 Continental Palmer Cox Brownie Sailor figural candle stick, 8 3/4", professional repair to base and rim of hat



LOT 107-108

- ___ Lot 109 Bulldog smoking pipe with red smoking jacket large figural humidor, 8", hairline to base



LOT 109-113

- ___ Lot 110 Continental elephant with pipe and red smoking jacket large figural humidor, 8", professional base repair

- ___ Lot 111 Continental frog with pipe and red smoking jacket figural humidor, 7 1/2"

- ___ Lot 112 Continental crouching frog with red smoking jacket figural humidor, 5 3/4"h

- ___ Lot 113 Continental frog with mandolin and blue cap figural humidor, 8", professional repair to hat rim

- ___ Lot 114 Continental monk at door figural match striker, 7 1/2"

- ___ Lot 115 Continental figural monk match striker, 8", minor rim repair

- ___ Lot 116 Figural match striker with two birds on bench with basket, 5 1/2", rim repair to back



LOT 114-118

- ___ Lot 117 Continental frog with mandolin on shell figural match striker, hairline, chip

- ___ Lot 118 Continental pig figural match striker, 6"

- ___ Lot 119 Continental frog with mandolin and flowers figural match striker, 6", rim chip, hairline

- ___ Lot 120 Continental figural match striker with boy, piano and drum, hairline, chip, 6"

- ___ Lot 121 Pair of Continental boy and girl figural vases, 6"

- ___ Lot 122 Continental lady frog figural candle holder, 8"

- ___ Lot 123 Continental sailor boy with boat figural vase, 5"



LOT 119-123

- ___ Lot 124 Fern and floral round charger with mottled center, 13"d

- ___ Lot 125 Cobalt shell and seaweed 6 sided spittoon, nice color, hairline, rim repair, 6"

- ___ Lot 126 Yellow square floral spittoon, 5 1/2"



LOT 124-126

- ___ Lot 127 ETRUSCAN cobalt sunflower sauce dish/syrup undertray, great color, ref: Karmason-Stacke this is the actual piece photographed on page 154, 5"d

- ___ Lot 128 ETRUSCAN cobalt sunflower syrup pitcher with pewter top, ref: Karmason-Stacke this is the actual piece photographed on page 154, nice color, 8"



LOT 127-133

- ___ Lot 129 ETRUSCAN bamboo syrup pitcher with pewter top, ref: Karmason-Stacke this is the actual piece photographed on page 154, 8", staining

- ___ Lot 130 ETRUSCAN pink sunflower syrup pitcher with pewter top, 8", ref: Karmason-Stacke this is the actual piece photographed on page 154

- ___ Lot 131 ETRUSCAN pink sunflower sauce dish/syrup undertray, great color, ref: Karmason-Stacke this is the actual piece photographed on page 154, 5"d

- ___ Lot 132 ETRUSCAN coral syrup pitcher, great color, 6 1/2", ref: Karmason-Stacke this is the actual piece photographed on page 154

- ___ Lot 133 ETRUSCAN albino coral syrup pitcher with pewter top, 6 1/2", ref: Karmason-Stacke this is the actual piece photographed on page 154

___ Lot 134 ETRUSCAN strawberry and apple plate on cobalt basketweave ground, great color, 9", ref: Karmason-Stack this is the plate that was photographed on page 152

___ Lot 135 ETRUSCAN cobalt daisy comport, 5 1/2", professional rim repair, ref: Karmason-Stacke this is the actual piece photographed on page 154

___ Lot 136 ETRUSCAN pineapple spittoon, 7", nice color

___ Lot 137 ETRUSCAN water lily spittoon, 7", rim damage

___ Lot 138 ETRUSCAN cobalt sunflower spittoon, 6", hairline, nice color

___ Lot 139 ETRUSCAN shell and seaweed spittoon, 6 1/2", rim repair, hairline



LOT 134-135



LOT 136-139

Griffen, Smith and Hill. Collection of Shell and Seaweed dinner, coffee and tea services, with accessories.



___ Lot 140 ETRUSCAN shell and seaweed comport with pointed shell bowl, rim nicks to bowl, 9 3/4"d, 6"h

___ Lot 141 ETRUSCAN shell and seaweed cakestand, 9 1/4"d, 5"h, nice

___ Lot 142 ETRUSCAN shell and seaweed comport, professional restoration to bowl, 9 1/4"d, 6 1/2"h



LOT 140-142

___ Lot 143 ETRUSCAN shell and seaweed butter dish with insert, great color

___ Lot 144 ETRUSCAN shell and seaweed waste bowl, 5"d, rim nicks, hairline

___ Lot 145 ETRUSCAN shell and seaweed humidior with shells on cover, great color and condition



LOT 143-145

___ Lot 146 ETRUSCAN shell and seaweed 4 piece teaset with large crooked spout teapot, sugar, creamer and spooner, sugar handles reattached, rim wear to spooner

___ Lot 147 ETRUSCAN shell and seaweed 3 piece teaset with large straight spout teapot, sugar and creamer, rim nick to creamer, rim repair to lid of sugar and handle repair to sugar



LOT 146-147

___ Lot 148 ETRUSCAN shell and seaweed pitcher, 6 3/4", professional rim repair

___ Lot 149 ETRUSCAN shell and seaweed pitcher, 6"

___ Lot 150 ETRUSCAN shell and seaweed small straight spout teapot, hairline, nice color

___ Lot 151 ETRUSCAN shell and seaweed 4" cream pitcher, rim chip

___ Lot 152 ETRUSCAN coral creamer, 4", hairline

___ Lot 153 ETRUSCAN shell and seaweed pitcher, 5", rim nick, hairline, nice color

___ Lot 154 ETRUSCAN shell and seaweed small crooked spout teapot, handle reattached, chip to spout



LOT 148-154

- ___ Lot 155 ETRUSCAN shell and seaweed 13 3/4" platter, rim chips, hairline, yellow center
- ___ Lot 156 ETRUSCAN shell and seaweed 13 3/4" platter, rim chips, yellow center
- ___ Lot 157 ETRUSCAN set of 6 shell and seaweed scalloped edge sauce dishes, two with rim nicks, one with hairline
- ___ Lot 158 ETRUSCAN shell and seaweed bowl with shells around rim, 8 1/4", rim repair, hairline
- ___ Lot 159 ETRUSCAN pair of shell and seaweed shell shaped sauce dishes, one with minor rim nick



LOT 155-159

- ___ Lot 160 ETRUSCAN shell and seaweed 9 1/4" plate, nice color, rare size
- ___ Lot 161 ETRUSCAN shell and seaweed 9 1/4" plate, rare size, nice color, not shown
- ___ Lot 162 ETRUSCAN shell and seaweed 9 1/4" plate, rare size, nice color, not shown
- ___ Lot 163 ETRUSCAN shell and seaweed set of 5-9 1/4" plates, rare size, minor nicks, hairline and/or rim repair, not shown



LOT 160-169

- ___ Lot 164 ETRUSCAN shell and seaweed set of 4-8" plates, nice color
- ___ Lot 165 ETRUSCAN shell and seaweed set of 4-8" plates, three with minor rim nicks, one with hairline, not shown
- ___ Lot 166 ETRUSCAN shell and seaweed mustache cup and saucer
- ___ Lot 167 ETRUSCAN shell and seaweed set of 6-7" plates, two with minor rim nicks
- ___ Lot 168 ETRUSCAN shell and seaweed set of 4-7" plates, three with minor rim nicks, one re-glued, not shown
- ___ Lot 169 ETRUSCAN shell and seaweed set of 6 cups and saucers, professional handle repair to one cup, rim repair to one saucer, nice set
- ___ Lot 170 Needle point throw pillow with shell and seaweed design, 12"d, not shown

- ___ Lot 171 ETRUSCAN albino shell and seaweed group to include teapot, sugar, creamer, saucer, 2-7" plates and 1-9" plate, chip to saucer, hairline to sugar



LOT 171

- ___ Lot 172 ETRUSCAN baseball and soccer jug, multi-color, 8", ref: Karmason-Stacke p. 158, rim repair



LOT 172-174

- ___ Lot 173 ETRUSCAN baseball and soccer jug, monochrome light blue, rim chip, hairline, 8", ref: Karmason-Stacke this is the pitcher photographed on page 158
- ___ Lot 174 ETRUSCAN baseball and soccer jug, monochrome dark green, rim repair, hairline, 8", ref: Karmason-Stacke this is the pitcher photographed on page 158

- ___ Lot 175 ETRUSCAN lily celery vase, great color, 8 1/2", hard to find



LOT 175

- ___ Lot 176 ETRUSCAN pink sunflower creamer, 4", great color
- ___ Lot 177 ETRUSCAN corn creamer with mounted pewter top, 5"
- ___ Lot 178 ETRUSCAN pair of coral salt and pepper shakers, 4", one with hairline
- ___ Lot 179 ETRUSCAN water lily mug with cobalt rim
- ___ Lot 180 ETRUSCAN water lily mug with cobalt rim, hairline, not shown
- ___ Lot 181 ETRUSCAN water lily mug
- ___ Lot 182 ETRUSCAN lot of 3 water lily mugs, minor rim nicks, not shown
- ___ Lot 183 ETRUSCAN lily salt dip
- ___ Lot 184 ETRUSCAN lily salt dip, rim repair, not shown
- ___ Lot 185 Pair of miniature chamber sticks with handles, attributed to Etruscan, 4 1/2"
- ___ Lot 186 ETRUSCAN 8" cauliflower plate, ref: Karmason-Stacke p. 151
- ___ Lot 187 ETRUSCAN 8" cauliflower plate, ref: Karmason-Stacke p. 151, rim nick, not shown
- ___ Lot 188 ETRUSCAN 8" cauliflower plate, ref: Karmason-Stacke p. 151, not shown
- ___ Lot 189 ETRUSCAN 8" cauliflower plate, ref: Karmason-Stacke p. 151, not shown
- ___ Lot 190 ETRUSCAN cauliflower 9" plate, ref: Karmason-Stacke p. 151
- ___ Lot 191 ETRUSCAN cauliflower 9" plate, ref: Karmason-Stacke p. 151, not shown
- ___ Lot 192 ETRUSCAN cauliflower 9" plate, ref: Karmason-Stacke p. 151, not shown
- ___ Lot 193 ETRUSCAN cauliflower 9" plate, ref: Karmason-Stacke p. 151, not shown
- ___ Lot 194 ETRUSCAN cauliflower 9" plate, ref: Karmason-Stacke p. 151, not shown
- ___ Lot 195 ETRUSCAN set of 3-9" cauliflower plates, rim nicks and hairlines, not shown
- ___ Lot 196 ETRUSCAN cauliflower teapot and sugar, professional lid repair to teapot, nick to handle of sugar



LOT 176-185



LOT 186-196

- ___ Lot 197 ETRUSCAN set of 4 graduated Hawthorne pattern pitchers, 5" to 8", ref: Karmason-Stacke this is the set of pitchers photographed on page 156, rim nicks and repairs



LOT 197

- ___ Lot 198 ETRUSCAN wild rose pitcher with yellow ground, cobalt accent rim and butterfly spout, rim repair, 7"
- ___ Lot 199 ETRUSCAN wild rose pitcher with butterfly spout, 5 3/4", spout nick, hairline
- ___ Lot 200 ETRUSCAN wild rose creamer and covered sugar, rim repair to both
- ___ Lot 201 ETRUSCAN Hawthorne creamer, rim nick, 4"
- ___ Lot 202 ETRUSCAN wild rose pitcher with yellow ground, cobalt rim and butterfly spout, 5"
- ___ Lot 203 ETRUSCAN wild rose creamer with butterfly spout, 4 1/2"



LOT 198-203

- ___ Lot 204 ETRUSCAN napkin cake plate with cobalt rim and bamboo handles, nice color, 12", minor professional rim chip repair to underside
- ___ Lot 205 ETRUSCAN round bread tray with wheat rim and cobalt mottled center, 11 1/2", minor rim chip to back
- ___ Lot 206 ETRUSCAN pond lily plate with cobalt center, nice color, 8", rim chip
- ___ Lot 207 ETRUSCAN Conventional teapot stand, 7", rim nicks to under side



LOT 204-207

- ___ Lot 208 ETRUSCAN oak leaf bread tray, ref: Karmason-Stacke p. 150, 12 1/2", rim chips
- ___ Lot 209 ETRUSCAN multi-color bowl with rim of vine and flowers, scene in center of angel riding lion, 9 3/4"
- ___ Lot 210 ETRUSCAN pair of large begonia dishes, one with rim nick, 9"



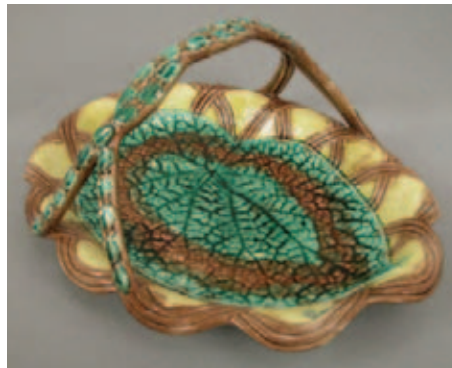
LOT 208-210

- ___ Lot 211 ETRUSCAN cobalt bird and iris three piece teaset with teapot, sugar and creamer, nice color, ref: Karmason-Stacke p. 158, professional rim repair to creamer



LOT 211

- ___ Lot 212 ETRUSCAN begonia leaf on wicker vine handled basket, professional handle and rim repair, 12"



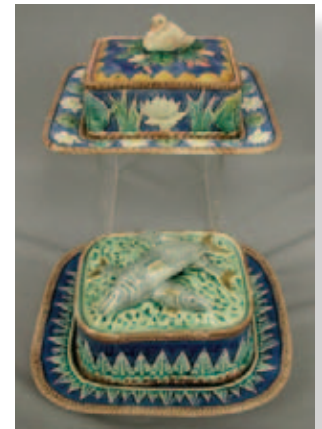
LOT 212

- ___ Lot 213 ETRUSCAN strawberry server with cream and sugar, white ground, nice color and detail, professional spout repair to creamer, 10 1/2"



LOT 213

- ___ Lot 214 ETRUSCAN cobalt water lily and swan sardine box and stand, ref: Karmason-Stacke p. 153, professional repair to cover
- ___ Lot 215 ETRUSCAN cobalt pointed leaves sardine box with overlapping fish on bed of seaweed on cover with matching stand, great color, minor professional rim repair to lid



LOT 214-215

- ___ Lot 216 ETRUSCAN rare lily punch bowl and 6 matching lily mugs, former Stern Collection, rim repair to one mug, base hairline to another, nice set



LOT 216

- ___ Lot 217 ETRUSCAN lily, daisy, wheat and fern cheese keeper, hard to find, 11"d, great color and detail



LOT 217



LOT 218-231

- ___ Lot 218 ETRUSCAN shell and seaweed butter pat with seaweed
- ___ Lot 219 ETRUSCAN shell and seaweed butter pat with seaweed, not shown
- ___ Lot 220 ETRUSCAN shell and seaweed butter pat with seaweed, not shown
- ___ Lot 221 ETRUSCAN shell and seaweed butter pat with seaweed, not shown
- ___ Lot 222 ETRUSCAN shell and seaweed butter pat without seaweed
- ___ Lot 223 ETRUSCAN shell and seaweed butter pat without seaweed, not shown
- ___ Lot 224 ETRUSCAN shell and seaweed butter pat without seaweed, not shown
- ___ Lot 225 ETRUSCAN shell and seaweed butter pat without seaweed, rim nick, not shown
- ___ Lot 226 ETRUSCAN pansy multi-colored butter pat
- ___ Lot 227 ETRUSCAN pond lily butter pat, minor rim nick
- ___ Lot 228 ETRUSCAN set of 3 geranium butter pats, various colors
- ___ Lot 229 ETRUSCAN begonia leaf on wicker butter pat
- ___ Lot 230 ETRUSCAN maple leaf on plate butter pat, pink ground
- ___ Lot 231 ETRUSCAN albino shell and seaweed butter pat



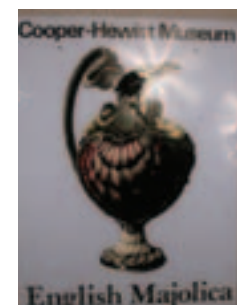
LOT 232-240

- ___ Lot 232 WEDGWOOD horse shoe butter pat with turquoise center, scarce
- ___ Lot 233 WEDGWOOD ocean butter pat
- ___ Lot 234 WEDGWOOD ocean butter pat, not shown
- ___ Lot 235 WEDGWOOD turquoise chrysanthemum butter pat
- ___ Lot 236 WEDGWOOD Argenta Chrysanthemum butter pat
- ___ Lot 237 FIELDING shell and fishnet butter pat, minor hairline, rare form
- ___ Lot 238 FIELDING morning glory, wheat, ribbon and bow butter pat, rim nick
- ___ Lot 239 HOLDCROFT honey comb and fern butter pat
- ___ Lot 240 Pansy and leaf butter pat, attributed to HOLDCROFT



LOT 241-249

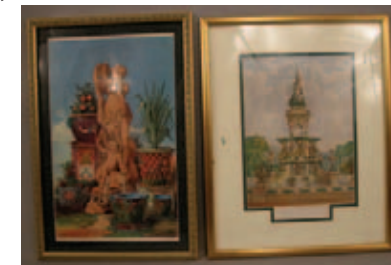
- ___ Lot 241 Begonia leaf on basket butter pat
- ___ Lot 242 Continental morning glory on napkin butter pat
- ___ Lot 243 Green geranium leaf butter pat
- ___ Lot 244 Fish head butter pat
- ___ Lot 245 Fish head butter pat, not shown
- ___ Lot 246 Continental leaf and basket butter pat with handle, lavender ground
- ___ Lot 247 Continental morning glory on napkin butter pat with handle, minor rim wear
- ___ Lot 248 Cobalt and leaf butter pat with handle, hairline, rare form
- ___ Lot 249 Leaf shaped butter pat with twig handle, minor nicks to back rim
- ___ Lot 250 Reproduction Etruscan shell and seaweed dessert service with 12-8" plates and 8 cups and saucers, not shown
- ___ Lot 251 MINTON felt dealer sign, not shown
- ___ Lot 252 Large exhibition poster from Cooper-Hewitt Museum featuring English Majolica with a Minton Palissy shell ewer with mermaids, poster is reverse painting on Plexiglas, 3'w, 4'h
- ___ Lot 253 Lithograph of Minton Palissy ewer, 12" x 16"
- ___ Lot 254 Lithograph of Minton Majolica ewer and plateau in frame, 12" x 16"
- ___ Lot 255 Lithograph of Minton jardiniere and pedestal around large water fountain, 13" x 19"
- ___ Lot 256 Lithograph of Minton Majolica Fountain, 15" x 18"
- ___ Lot 257 Framed print of Wedgwood swan urn, 9" x 11", not shown
- ___ Lot 258 Poster, "Victorian Majolica" announcing a lecture by Marilyn G. Karmason at the Rye Free Reading Room, Rye, New York featuring photos of George Jones dragon fly and water lily garden seat, Minton pigeon tureen and Minton 4 tier oyster server, 28"x36", not shown



LOT 252



LOT 253-254



LOT 255-258

SESSION II, SATURDAY MORNING
 LOT 300 TO 699



LOT 300-302

- ___ Lot 300 GEORGE JONES floral salt cellar, rim chip, rare form
- ___ Lot 301 GEORGE JONES rare form lily of the valley napkin ring with pink ribbon and bow, professional repair to leaf tip, 6"l
- ___ Lot 302 HOLDCROFT pond lily salt dip



LOT 303

- ___ Lot 303 WEDGWOOD fisherman pulling fishnet figural pipe/cigar stand, repair to tip of fishnet, 8"l



LOT 304-305

- ___ Lot 304 GEORGE JONES fox figurine ash tray, professional repair to fox's ears and rim, 4" w
- ___ Lot 305 Figural dog paperweight, 3 1/4"

- ___ Lot 306 GEORGE JONES pink chestnut mug, professional hairline repair, 4"
- ___ Lot 307 GEORGE JONES rustic floral and tree bark creamer, 3"



LOT 306-307

- ___ Lot 308 GEORGE JONES morning glory chamber stick candle holder lacking butterfly cover and candle snuffer, great color and detail, professional handle repair
- ___ Lot 309 GEORGE JONES trumpet vase supported by three branches, vase decorated with grapes and vine, 8", professional rim repair



LOT 308-309

- ___ Lot 310 MINTON pair of boy and girl Hogarth figural match holders, ref: Karmason-Stacke p. 60, 7 1/2", professional repair to rim of boy's basket and arms and base of girl
- ___ Lot 311 MINTON pair of figural boy and girl vintagers, ref: Karmason-Stacke the pieces photographed on page 60, 8"h, 1868, boy has professional repair to raised hand and rim nick to basket



LOT 310-311

- ___ Lot 312 HOLDCROFT figural bird on oak leaves and acorns inkwell with twig feet, ref: Karmason-Stacke II this is the actual piece photographed on page 226, 13", professional repair to bird's heads



LOT 312

- ___ Lot 313 MINTON turquoise and basket weave vases on square bases with applied flowers and leaves, 6 3/4”h, shape no. 1316, professional rim repair to both



LOT 313

- ___ Lot 314 GEORGE JONES butterfly patch box, 4”, ref: Karmason-Stacke the actual piece photographed on page 102, professional repair to rim of cover



LOT 314

- ___ Lot 315 MINTON pair of figural sweet meat dishes with a boy and a girl on pedestal between a pair of pond lily leaves on twig base, shape no. 1566, 15”l, professional rim repair to leaves of both, girl professionally reattached to base



LOT 315

- ___ Lot 316 MINTON cobalt lily of the valley 5 finger flower holder, outstanding color and detail, shape no. 1266, professional rim repair, 7 1/2”



LOT 316

- ___ Lot 317 MINTON figural shell flower holder, 7”, hairline
- ___ Lot 318 ROYAL WORCESTER pointed shell comport supported by 3 dolphins, professional rim repair to points, 5 1/4”



LOT 317-318

- ___ Lot 319 Adams swan and boat flower holder, professional repair to swan’s neck, 8 1/4”l



LOT 319

- ___ Lot 320 MINTON five finger pineapple flower holder, shape no. 1107, 8”, rare form, professional rim and base repair



LOT 320

- ___ Lot 321 English two handled center bowl with cobalt ground, pink ribbon and bow, green foliage surrounding turquoise oval pendants, professional hairline repair, 11 1/2”w



LOT 321

- ___ Lot 322 HOLDCROFT turquoise honey comb teapot, professional repair to rim of lid and spout, 5"
- ___ Lot 323 HOLDCROFT turquoise honey comb pitcher, spout rim repair, 8"
- ___ Lot 324 HOLDCROFT turquoise honey comb waste bowl, 5"



LOT 322-324

- ___ Lot 325 FIELDING fan, scroll and insect turquoise tea service with tray, ref: Karmason-Stacke II this is the set photographed on page 115, rare to find complete, hairline and rim repair to creamer, minor spout repair to teapot, handle repair to both cups and rim repair to tray, tray 21"



LOT 325

- ___ Lot 326 LEAR lily of the valley and rope pitcher, professional spout, rim and handle repair, 6 3/4"
- ___ Lot 327 SAMUEL LEAR lily of the valley covered cheese keeper, ref: Karmason-Stacke the actual piece photographed on page 114, professional rim chip repair to underside of base, 8 1/2"
- ___ Lot 328 SAMUEL LEAR lily of the valley and rope pitcher with lavender top, ref: Karmason-Stacke the actual piece photographed on page 114, 12 1/2", rim chip, staining



LOT 326-328

- ___ Lot 329 MINTON 8" turquoise tile with fruit and flowers, shape no. 1125, ref: Karmason-Stacke p. 33
- ___ Lot 330 MINTON 8" tile with corn, and flowers, great color and detail, ref: Karmason-Stacke p. 33, minor glaze nick, shape no. 1125



LOT 329-330

- ___ Lot 331 GEORGE JONES rare cobalt swan in water 8" square tile, great detail and color
- ___ Lot 332 GEORGE JONES cobalt water lily, cattail and floral 8" square tile, great color and detail



LOT 331-332

- ___ Lot 333 GEORGE JONES turquoise water lily 8" square tile, great color and detail
- ___ Lot 334 GEORGE JONES cobalt water lily 8" square tile, professional repair to leaf



LOT 333-334

- ___ Lot 335 GEORGE JONES turquoise lily of the valley 8" square tile, great detail
- ___ Lot 336 WEDGWOOD cobalt floral 8" square tile with lavender ribbon and bow, great color and detail
- ___ Lot 337 English cobalt floral 8" square tile, attributed to Wedgwood
- ___ Lot 338 MINTON 8" square tile with leaf and floral motif



LOT 335-338

- ___ Lot 339 HOLDCROFT figural bear with drum pitcher, ref: Karmason- Stacke the actual piece photographed on page 107
- ___ Lot 340 HOLDCROFT figural bear with spoon pitcher, 9 3/4", ref: Karmason-Stacke the actual piece photographed on page 107 professional repair to teeth of bear



LOT 339-340

- ___ Lot 341 MINTON pair of Toby jugs of man and woman, shape no. 1140 and 1139, 11"h, ref: Karmason- Stacke p. 62, professional rim repair to lady



LOT 341

- ___ Lot 342 ROYAL WORCESTER figural fish pitcher with fish handle, 11 1/2", ref: Karmason-Stacke this is the actual piece photographed on page 116, professional rim repair



LOT 342

- ___ Lot 343 EDWARD STEELE figural frog on lily pad pitcher, 12 1/2", ref: Karmason-Stacke the actual piece photographed on page 127, hairline to spout, base rim repair
- ___ Lot 344 French Five Lilles figural frog smoking pipe with blue jacket pitcher, 10", base chip, ref: Cunningham p. 126
- ___ Lot 345 Edward Steele figural frog pitcher, ref: Karmason-Stacke p. 127, 6 1/2"
- ___ Lot 346 Palissy style jug of tree trunk decorated with oak leaves and acorns wrapped with snake and frog on spout, ref: Karmason-Stacke p. 138, 10", minor base nick
- ___ Lot 347 Frog on melon figural pitcher, 7"h, professional rim repair to lower lip of frog, nice color



LOT 343-347

- ___ Lot 348 Figural double pelican pitcher, 9", professional repair to beak of both pelicans
- ___ Lot 349 Figural owl pitcher, 11"
- ___ Lot 350 French figural rat with umbrella pitcher, 7 3/4"
- ___ Lot 351 Figural cucumber pitcher, 8 1/2", hairline, spout nick
- ___ Lot 352 Figural owl pitcher, 7 1/4"



LOT 348-352

- ___ Lot 353 Figural fish pitcher, 13", ref: Karmason-Stacke p. 111
- ___ Lot 354 Figural fish pitcher, 11 1/2", ref: Karmason-Stacke p. 111
- ___ Lot 355 Figural fish pitcher, 10 1/4", base and rim repair
- ___ Lot 356 Figural fish pitcher, 9", ref: Karmason-Stacke p. 111
- ___ Lot 357 Four sided figural fish pitcher with fish handle, 8"



LOT 353-357

- ___ Lot 358 Onnaing French figural pitcher of Banker, "Reforme Urgente", 11"
- ___ Lot 359 French Onnaing figural pitcher of man seated on barrel, 11"
- ___ Lot 360 Sarreguemines double face pitcher, shape no. 2313, 8 3/4", professional rim and handle repair



LOT 358-360

- Lot 361 Krause Continental Avian bird gentleman with top hat, glasses and umbrella figural bottle, 15”, circa 1880, ref: Karmason-Stacke II this is the actual piece photographed on page 228, professional repair to tip of beak



LOT 361



LOT 362

- Lot 362 MINTON Hugues Protat Heron and Fish ewer, 21”h, ref: Karmason -Stacke p. 57, shape no. 1241



LOT 363-364

- Lot 363 MINTON “Protat” jug, 15”, ref: Karmason-Stacke the actual piece used on page 41, shape no. 900, date code for 1864, professional spout and rim repair
- Lot 364 MINTON Palissy style ewer with shell motif, mermaid under spout with cobalt ground, ref: Karmason-Stacke the actual piece photographed on page 41, 14”, shape no. 1136, professional repair to spout, handle and base



LOT 365

- Lot 365 GEORGE JONES turquoise small size “Punch” punch bowl, 11”d, ref: Karmason-Stacke the actual piece photographed on page 102, excellent condition



LOT 366

- Lot 366 GEORGE JONES pair of moon flasks with hand painted scenes of lady on one side, the other side is turquoise, 15”, ref: Karmason-Stacke II these are the actual flasks photographed on page 225 also shown on page 90 from George Jones illustration, professional base foot repair to one and rim repair to other



LOT 367-368

- Lot 367 MINTON bough-pot and cover, painted continuous scene of goats grazing in meadow rural scene, great detail, 6 1/2”d, shape no. 1004
- Lot 368 MINTON bough-pot and cover, painted continuous scene of cows grazing near lake in rural scene, great detail, 6 1/2”d, shape no. 1004